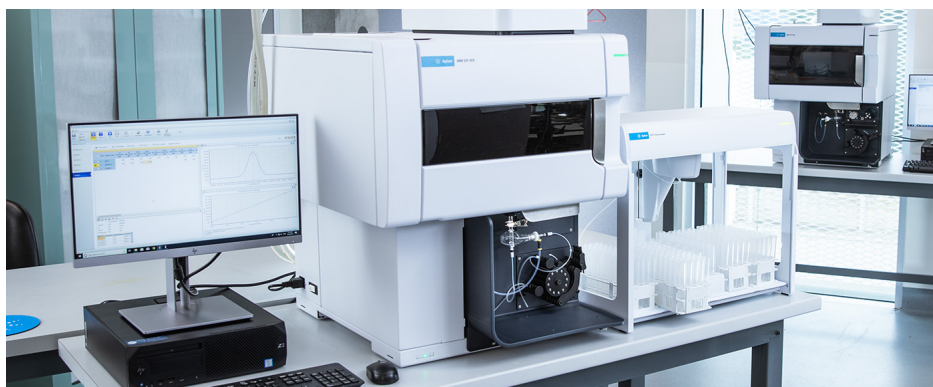


# Agilent ICP Expert Software

Powerful software with smart tools for ICP-OES

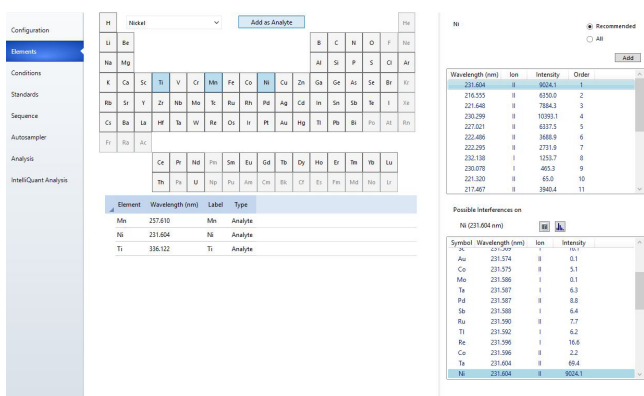


## Introduction

The Agilent 5800 ICP-OES and Agilent 5900 ICP-OES are controlled by the Agilent ICP Expert software. ICP Expert uses a familiar worksheet interface and offers simplified method development and sample analysis. It includes the IntelliQuant function that allows the analyst to gather concentration data on up to 70 elements in a sample. ICP Expert also includes quality control (QC) functionality, smart maintenance features, and a suite of predeveloped templates for common analytical methods.

## Easy-to-use software

ICP Expert software includes smart features that reduce the learning-curve for new users, while allowing experienced analysts to easily run complex methods. The layout of the software reflects the most common workflows of actual applications. To set up and perform an analysis, the analyst simply follows the sequence of pages in the displayed order. The current page is always highlighted to provide full visibility of progress in the workflow (Figure 1).



**Figure 1.** Agilent ICP Expert software provides a clear, logical workflow to guide users through method setup and analysis.

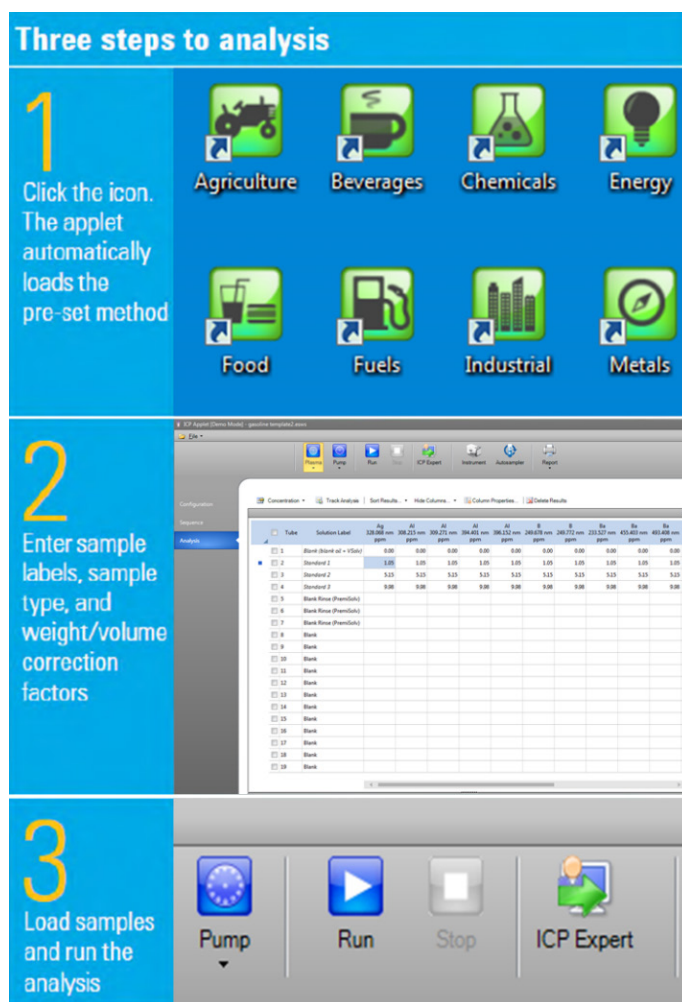
The software includes a suite of predeveloped templates covering a range of common analytical methods and sample types, such as food, environmental, and water sample analysis. These templates are an excellent starting point for any user looking to perform an unfamiliar analysis. The templates can significantly reduce the time taken to fully develop a new method.

## Applet mode

ICP Expert software uses application-specific software applets that allow users of all skill levels to confidently run ICP-OES analyses.

Someone with administrator privileges can choose which application methods are available to each user. A user can then walk up and select from the ICP applets available to them (Figure 2, step 1). The applet automatically loads the method (Figure 2, step 2). The user can then enter sample information and start analysis by igniting the plasma and clicking the Run button (Figure 2, step 3).

This step-by-step approach ensures that all users can achieve accurate and reproducible results with minimal training. Applets can easily be imported and exchanged with other users by using the built-in Applet Management tool.



**Figure 2.** ICP Expert software includes several applets for common applications. In three steps the analyst can start an analysis.

## Simplified method development

The ICP Expert software contains several smart tools to simplify method development. These tools allow analysts to spend less time setting up methods and more time running samples (1, 2).

The AVS Parameter Calculator is a useful tool that provides recommended timings on method parameters, including timings and flow rates, from analyst defined tubing type and length.

AVS Parameter Calculator

**Instrument Parameters**

Sample pump tube type: White/White

Internal Diameter (ID) in mm: 1.02

Autosampler tube length (mm): 1000

Autosampler tube rinses: 3

**Recommended Configuration**

Minimum loop volume (mL): 0.5

Loop volume (mL): 0.5

AVS pump uptake rate (mL/min): 36.7

AVS pump inject rate (mL/min): 9.9

Uptake delay (s): 6.4

Bubble inject time (s): 1.8

Preemptive rinse time (s): 1.1

Stabilization time (s): 5

Apply Cancel

Figure 3. AVS Parameter Calculator in ICP Expert

The Timing Monitor function in the software allows users to optimize their timings and measurement conditions with a clear signal readout for the whole sample to sample process.

IntelliQuant Screening (available in the Pro-pack software module) allows users to run a quick, semiquantitative screening of samples. IntelliQuant Screening collects data from the entire spectral range from 167 to 785 nm in as little as 15 seconds, per sample, as shown in Figure 4.

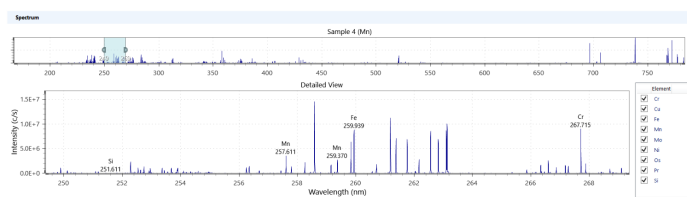


Figure 4. A full wavelength scan can be collected in as little as 15 seconds.

Using this data, IntelliQuant Screening displays the relative concentrations of up to 70 elements in a sample on a periodic table display (refer to Figure 5). Any potential interferences are identified and presented to the user in a simple and clear way. The optimal analysis wavelengths are determined, based on potential interferences and other factors. All this information is provided automatically, requiring no prior knowledge of the contents of the samples being measured or expertise in spectroscopy.

With the insights provided by IntelliQuant Screening, it is easy for the operator to create a customized quantitative method for sample analysis through importing the recommended wavelengths into a new worksheet.

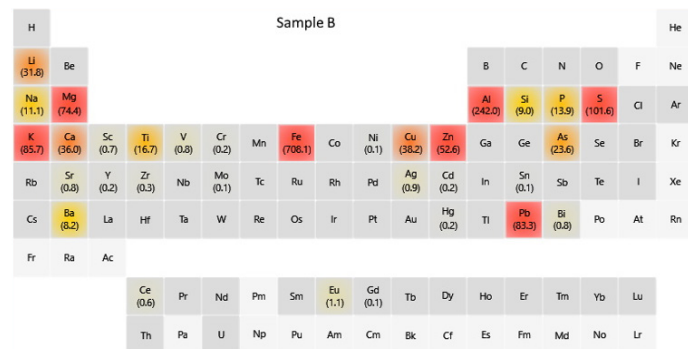


Figure 5. IntelliQuant generates a heat map to visually present the relative concentrations of elements present in a sample. The information provides useful analytical insight into the sample, helping with method development.

## Data Management

ICP Expert has built in tools to streamline your data analysis workflow. The summary row automatically selects the best results for each wavelength from all available measurements of a sample and compile them into one row. All remeasurement data, such as reactive dilutions, is retained and organized by sample and can be collapsed to show only a one line summary.

	Rack:Tube	Solution Label	Timestamp	As 188.980 nm ppm	Ba 455.403 nm ppm	Cd 214.439 nm ppm	Co 238.892 nm ppm	Cr 267.716 nm ppm
<input type="checkbox"/>	S1:1	Blank	22/11/2023 1:21:28 PM	0.00	0.00	0.00	0.00	0.00
<input checked="" type="checkbox"/>	S1:2	Standard 1	22/11/2023 1:22:08 PM	5.00	5.00	5.00	5.00	5.00
<input type="checkbox"/>	S1:2	Sample 1	22/11/2023 1:33:51 PM	5.01 !	5.01 !	5.01 !	5.00 !	5.00 !
<input checked="" type="checkbox"/>	S1:2	Summary	22/11/2023 1:33:51 PM	5.01	5.01	5.01	5.00	5.00
<input type="checkbox"/>	S1:2	Original	22/11/2023 1:22:49 PM	5.01	5.01	5.01	5.00	5.00
<input type="checkbox"/>	S1:2	Dilution - 10	22/11/2023 1:33:51 PM	5.42	5.65	5.59	5.43	5.51
<input checked="" type="checkbox"/>	S1:2	Sample 2	22/11/2023 1:35:23 PM	4.98 !	4.99 !	4.99 !	4.98 !	4.99 !
<input checked="" type="checkbox"/>	S1:2	Summary	22/11/2023 1:35:23 PM	4.98	4.99	4.99	4.98	4.99
<input type="checkbox"/>	S1:2	Original	22/11/2023 1:23:29 PM	4.98	4.99	4.99	4.98	4.99
<input type="checkbox"/>	S1:2	Dilution - 10	22/11/2023 1:35:23 PM	4.95	5.22	5.16	5.03	5.09

Figure 6. Summary Row showing one line summary of the best or optimum results, and expanded view showing all measurements for each sample vial.

## Outlier conditional formatting

The outlier conditional formatting (OCF) feature allows users of ICP Expert to identify potentially problematic results. OCF uses one or more color-based configurable rules to check the results on the analysis screen (Figure 7). For example, results will be flagged if they:

- Are above the defined concentration range
- Have a high %RSD
- Are below the method detection limit (MDL)
- Fail internal standard tests

If there are multiple wavelengths for an element in the worksheet, OCF can highlight inconsistencies in the results between wavelengths. Obtaining different results for the same element might indicate a potential interference or calibration issue on one or more of the wavelengths. Flagged results will also be avoided by the Summary Row.

<input type="checkbox"/>	Rack:Tube	Solution Label	Outlier Summary	Sb 206.834 nm ppm	Sb 217.582 nm ppm	Sb 231.146 nm ppm
<input type="checkbox"/>	1:1	Blank		0.00	0.00	0.00
<input type="checkbox"/>	1:2	Cr				
<input type="checkbox"/>	1:3	Sb		50.00	50.00	50.00
<input checked="" type="checkbox"/>	1:8	Cr	F	0.12	0.05	0.05
<input type="checkbox"/>	1:9	Sb		4.91	4.92	4.88
<input type="checkbox"/>	1:10	Sb+Cr	F	5.65	5.14	5.11
<input type="checkbox"/>	1:11	Test3				
<input type="checkbox"/>	1:12	Test4				

Outliers for [Sb+ Cr]:  
Element Concentration % RSD > Pass Value: Sb

**Figure 7.** Outlier Conditional Formatting provides a simple way for users to identify potentially problematic results. Results that fail to meet specified rules will be flagged with a letter corresponding to the failure mode and a colored flag for quick identification (a green 'F' in this image).

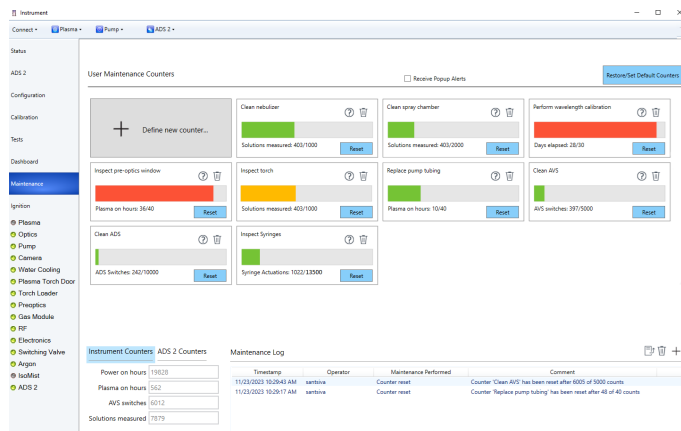
## Early maintenance feedback

Both the 5800 and 5900 instruments have over 100 sensors that monitor their performance. The ICP Expert software includes an early maintenance feedback (EMF) function that utilizes these sensors and other counters to alert the operator when maintenance is required.

Traffic light color-coding of the counters show which maintenance activities should be done immediately and which can wait (Figure 8). The counters are useful for most general applications, but users can set the counter limits to suit their specific requirements.

The maintenance log built into EMF digitally records the maintenance history of the ICP-OES. When troubleshooting a problem it is easy to determine if the instrument has been sufficiently maintained.

EMF reduces downtime and repair costs by scheduling routine maintenance of components based on actual use, rather than at set time intervals.



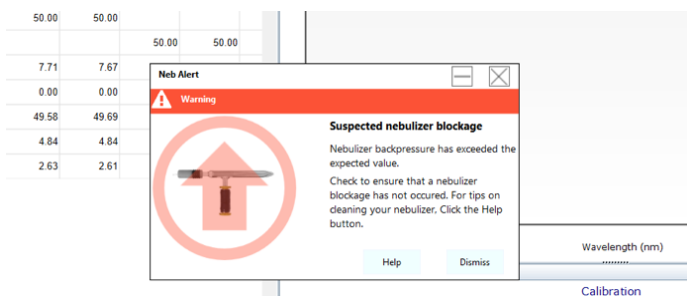
**Figure 8.** Early maintenance feedback functionality with integrated maintenance log helps to keep your instrument properly maintained, reducing unplanned downtime and ensuring that you continue to produce consistent, high-quality results.

## Intelligent rinse

The intelligent rinse software function is available in the optional Pro-pack software module for ICP Expert. Intelligent rinse monitors the intensities of nominated element wavelengths during the rinse period. The function automatically ends the rinse when these intensities reach a threshold. The threshold is based on which rinse setting has been selected: Thorough, Moderate, or Quick. The rinse period varies, depending on the time taken to wash out each individual sample to the threshold. Intelligent rinse improves sample throughput while preserving the accuracy of the results.

## Neb alert

Neb alert is a smart feature of the ICP Expert software that monitors nebulizer back-pressure during an analysis. Neb alert warns the user (Figure 9) if a potential blockage or leakage is detected—a common problem when analyzing samples with a high total dissolved solids (TDS) content or samples that still include particles. The alert allows the analyst to stop the analysis and correct the issue rather than continue and collect potentially incorrect data.



**Figure 9.** Neb alert provides an instant notification to the user if a suspected nebulizer blockage or leakage is detected.

## Accessory control

The Agilent SPS 4 autosampler is fully controlled through the ICP Expert software. The user can select the sample rack type, rinse pump speed, and control the sample probe from within the software.

Operation of the IsoMist programmable temperature-controlled spray chamber is also fully integrated into the ICP Expert software.

Control of the Agilent Advanced Valve System (AVS) 6- or 7-port switching valve and the Agilent Advanced Dilution System 2 (ADS 2) is fully integrated and controlled through the ICP Expert software via the optional Pro-pack software module. (The 4-port version of the AVS is supported by the base software.) Full-integration of the AVS and ADS 2 ensures optimal timing, unlike third-party switching valve accessories that use complicated, standalone control software. ICP Expert incorporates the AVS parameter calculator that facilitates the setup and method development of the AVS 6/7. Also now includes the AVS/ADS Timing Monitor feature to optimize timings and parameters.

The Agilent recirculating chiller enables analysts to monitor and set water-cooling parameters directly from the instrument PC.



**Figure 10.** Agilent recirculating chiller.

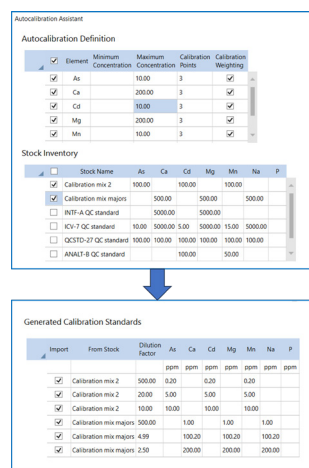
On-screen notifications allow labs to respond immediately to faults and avoid more serious breakdowns.

## Seamless control of Agilent Advanced Dilution System 2

The Agilent Advanced Dilution System 2 (ADS 2) is integrated natively into ICP Expert for a seamless autodilution experience.

The ADS 2 automates manual tasks and is optimized to maximize throughput with the following functions:

- Multipoint calibration from a single stock standard; no need to manually make up standards, saving time and avoiding mistakes.
- Autocalibration Assistant (Fig. 11) can recommend calibration standards across a defined concentration range using the integrated common stock standards lists. It automatically calculates the dilution factors required to accurately create each standard at the required concentration.



**Figure 11.** The Autocalibration Assistance can prepare standards from a nominated stock solution.

- Automatic Reactive dilution; in the event of an unexpected result, such as a sample measurement outside of the calibration range, or when Internal Standard ratios are outside the defined customizable thresholds. The summary row feature then automatically picks the optimal result for each element out of the available measurements.
- Dilution Lists allows the customization of which elements and wavelengths can trigger reactive dilutions on a per-sample basis, ensuring you only perform a dilution when you need to.



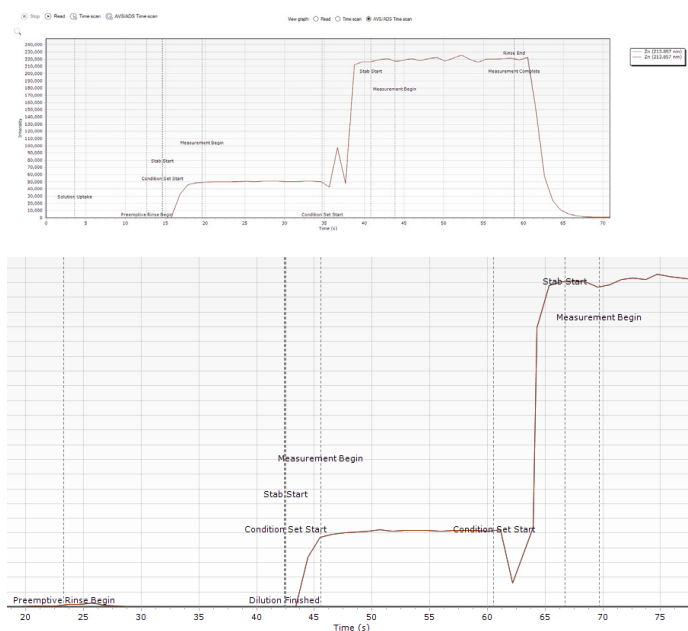
- Prescriptive dilution; during method setup, a defined (prescriptive) dilution factor can be entered by analysts and the ADS 2 will automatically perform the defined dilution, removing a manual step from the workflow, improving accuracy, reducing contamination and single use plastic labware.
- Real-time flow path diagrams to assist users in understanding and troubleshooting their ADS 2, coupled with detailed help content.

## ESI PrepFast and SampleSense compatibility

The 5800 and 5900 ICP-OES can also be coupled with the ESI prepFAST autodilution system and SampleSense switching valve. Note the ESI SC software needs to be running in the background for integration with ICP Expert.

## AVS/ADS Timing Monitor

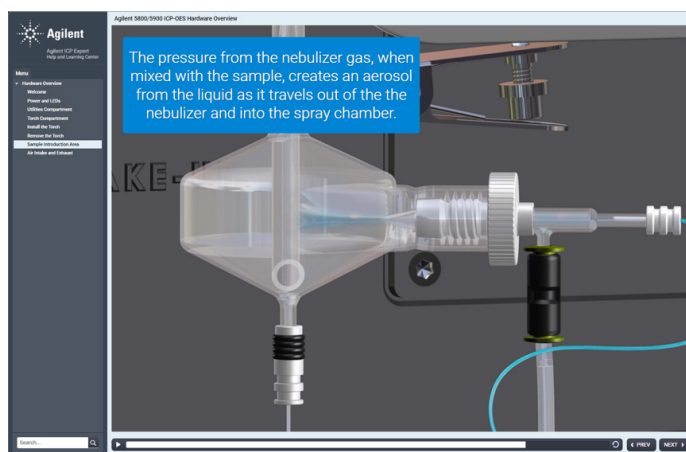
Analysts can troubleshoot their AVS and ADS 2 systems using the Timing Monitor. Various issues with the sample introduction system can be spotted via the Timing Monitor graph. This, in combination with the extensive Help and Learning Center content, not only assists with diagnosing the issue but also with understanding the next steps once the issue has been found.



**Figure 12.** AVS/ADS Timing monitor full (top) and zoomed (bottom), showing the analyte signal during each step of the method.

## Comprehensive help and learning center

ICP Expert contains a comprehensive and interactive Help and Learning Center (Figure 13). This resource includes an extensive set of instructional videos on performing common hardware and software-related tasks coupled with detailed content on the ICP-OES, AVS 6/7 and ADS 2 to further understand certain functionalities and assist with troubleshooting. The videos improve the confidence and knowledge of less experienced operators by helping them to set up and maintain their instruments in the best way. Functions such as Neb Alert are integrated with the Help and Learning Center. This means the appropriate information and videos will be displayed when a sensor detects a problem.



**Figure 13.** The ICP Expert help and learning center provides extensive video instructions on how to perform common instrument setup and maintenance tasks.

## Correction options to suit any situation

The ICP Expert software provides several options to correct background or spectral interferences:

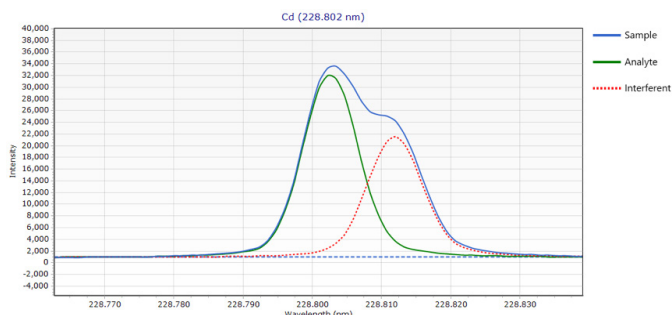
- Fitted background correction (FBC) uses an advanced algorithm to model the background signal under the analyte peak. FBC is applied simultaneously upon measurement of the analyte peak (3), providing fast, easy, and accurate background correction. Requiring no method development, FBC provides accurate and automatic correction of both simple and complex background structures.
- Off-peak correction is a traditional ICP-OES correction technique that allows the analyst to manually select correction points—from left, right, or both sides of the analytical peak.

- Fast automated curve-fitting technique (FACT) correction. The proprietary Agilent FACT technique applies spectral modeling to accurately analyze complex analytical spectra (4). FACT is a powerful alternative to Inter-Element Correction (IEC) and can also be used for accurate background correction. It is useful when highly complex background structures are observed, and other background correction techniques like FBC or off-peak correction are unsuitable.

FACT provides real-time spectral correction using a spectral modeling technique to mathematically deconvolute (separate) the analyte signal from the raw spectrum.

Models are built by measuring the expected components separately. The method typically includes measuring a blank solution, a pure analyte solution, and pure interferent solutions. Figure 14 shows a FACT model applied to the Cd emission line at 228.802 nm, which suffers an interference from As. FACT mathematically separates the two peaks allowing accurate measurement of the analyte signal. For overlapping interferences that cannot be resolved using FBC or FACT, inter-element correction (IEC) is available.

Background correction for each analyte can be applied after analysis via the spectrum display.



**Figure 14.** Example of a FACT model being applied to Cd 228.802 nm, with interference from As. A solution containing ~ 1000 µg/L Cd in 20 mg/L As was analyzed on an Agilent 5900 ICP-OES.

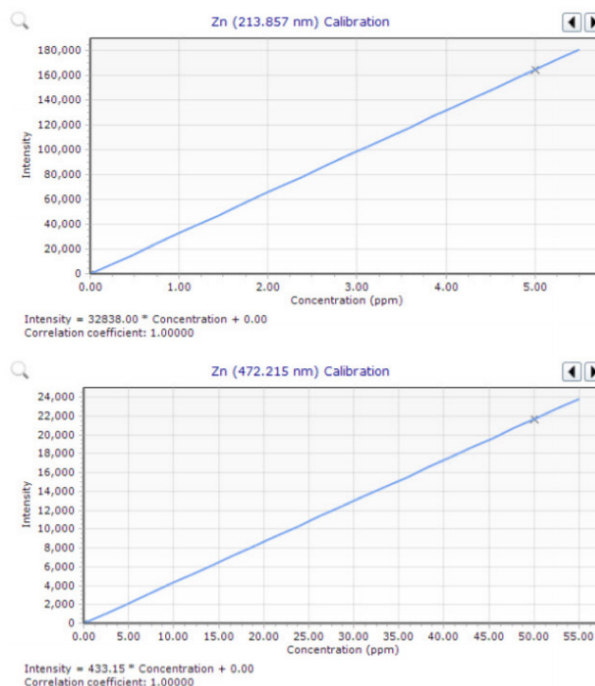
## Extended dynamic range

Utilizing the extensive wavelength range of the Vista Chip III CCD detector, the MultiCal function of the ICP Expert software can create multiple calibration ranges for sample analysis. This capability increases the linear dynamic range.

Many elements can be measured using more than one wavelength. The different wavelengths often have different sensitivities, so using a combination of wavelengths for the same element extends the dynamic range of the determination. Selecting the most sensitive line will give the best detection limits and accurate measurement of low-level analytes. Less sensitive lines allow the measurement of higher-concentration analytes in the same measurement.

The MultiCal function requires only a few standards to define the calibration range for each wavelength. Figure 15 shows two calibration graphs for Zn. The first calibration used a sensitive line for Zn, with a concentration range of 0 to 5 ppm. A less sensitive line extended the calibration range to 55 ppm.

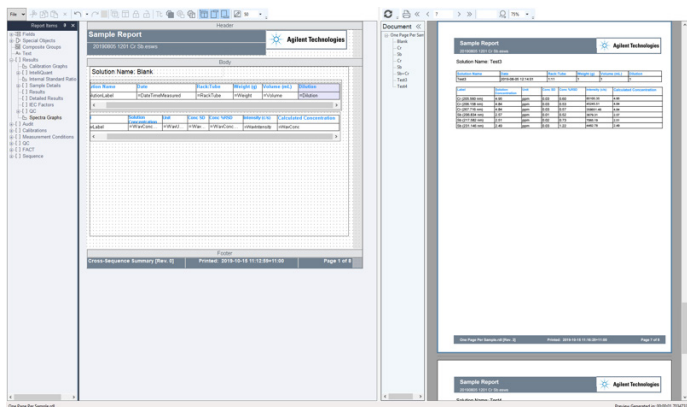
Based on the measured concentrations for each wavelength, MultiCal reports an appropriate result based on the defined calibration ranges for those wavelengths. This extends the dynamic range of the analysis from parts per billion to percentage levels. Concentration ranges can be overlapped providing a simple way to verify sample results.



**Figure 15.** In this example, MultiCal uses the 213.857 nm Zn emission line to measure concentrations in the range 0 to 5 ppm, and the 472.215 nm line for higher concentrations, up to 55 ppm.

## Reporting options

The ICP Expert software includes the OpenLab Intelligent Reporting platform. This platform enables the analyst to configure reports to include only the data required, and to customize the report layout, including adding a company logo. Once set up, the report layout and design can be saved as a template for future use, see Figure 16.



**Figure 16.** The OpenLab Intelligent Reporting platform can create customized reports.

## Expanded QC support for USP <232>/<233> and ICH Q3D methods

The ICP Expert software supports compliance with the USP and ICH requirements for measuring elemental impurities in pharmaceutical products and their components. Software features include:

- J-value spike calculator
- Flagging of pass/fail acceptance criteria limits for validation tests and product or component composition analysis
- Compatibility with the Agilent 21 CFR 11 extension pack
- Facilitating the set up, running, and validation of a method, compliant with USP<232>/<233> and ICH QRD
- Method templates to accelerate method development

## Data transfer and export

Results are easily transferred to a Laboratory Information Management System (LIMS) or other application using the data exporting options offered in the ICP Expert software.

Data can be exported in CSV format for direct transfer to a spreadsheet or other program for data manipulation, trend analysis, or process monitoring. The ICP Expert software allows multitasking: Acquired data can be reviewed, processed, and reported while the ICP-OES collects data for the current batch of samples.

## Base- and Pro-pack versions of ICP Expert software

The ICP Expert software is available in two versions: base- and Pro-pack. The base-pack ICP Expert software is used for easy ICP-OES instrument setup and routine operation. The Pro-pack software offers other features to enhance instrument productivity and performance including:

- Rate driven QC: automatically run QC solutions after a defined number of samples
- IntelliQuant Screening including Snapshot mode for quick sample insight
- Export to Microsoft Excel (Excel not provided)
- Support for 3rd party autosamplers such as Cetac Oil 7400, 7600, ASX520, 560, 1400 and 1600 and EXR8, ESI SC-2, 4, 8, 14 and Micro and AIM 1250 and 3600
- Trend monitoring of argon back-pressure to the nebulizer, and argon emission per solution
- Oxygen addition and nitrogen purge
- Integrated control of the Advanced Valve System switching valve accessory (AVS 6 or 7)
- Integrated control of the Advanced Dilution System 2 (ADS 2)
- Control of the ESI prepFAST autodilution system and SampleSense switching valve
- Intelligent Rinse
- Ability to customize replicate counts for different solution types

## Remote control with the Automation Software Pack

The Automation Software Pack is a programming toolkit (SDK) that enables third party client software control of the ICP-OES instrument— sending commands and receiving real time data and instrument status updates via an Internet connection. This is true remote control and offers the ultimate in flexibility.

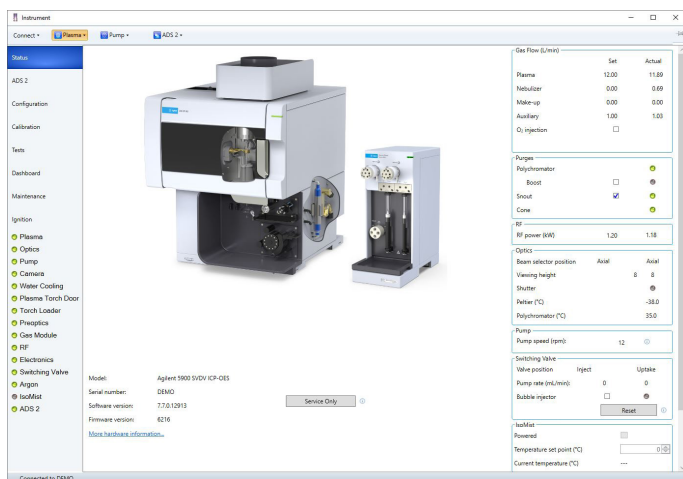


## ICP Expert software for 21 CFR Part 11 compliance

An optional 21 CFR 11 extension pack is available to assist with the requirements of the US FDA 21 CFR Part 11 (and equivalent regulations in other countries). The pack supports assigning user access privileges, creating audit trails, electronic records, and electronic signatures. Autodilutor configurations and actions are also captured using these features. The extension pack is compatible with the Pro-pack version of ICP Expert.

## Easy troubleshooting

As shown in Figure 17, the Instrument Status page provides an immediate overview of the status of the system. Continual, automatic, background monitoring allows you to quickly check the instrument status or troubleshoot, should a problem arise.



**Figure 17.** View the interactive Instrument Status page to check the current status of the instrument and identify causes of problems.

The interactive diagram of the instrument gives an overview of the instrument status including the AVS 6/7, or ADS 2 if fitted and suggests the possible cause of any errors. For more detailed guidance, the instrument dashboard provides live information on various parameters, making it easy to find and correct problems. The status is automatically updated when any system changes occur.

[www.agilent.com/chem/icp-oes](http://www.agilent.com/chem/icp-oes)

DE.8138078704

This information is subject to change without notice.

© Agilent Technologies, Inc. 2024  
Printed in the USA, May 1, 2024  
5994-1517EN

## Checking instrument performance

For periodic performance testing of the instrument, a suite of tests is available to automatically verify instrument performance. Poor utilities and instrument setup, especially of water, gas, exhaust, and sample introduction systems, is often the cause of performance problems or instrument failure. The tests check the basic functionality of the instrument to confirm that the system is working to specification, which can be an important troubleshooting tool. Tests to confirm installation and function of the AVS 6/7 and ADS 2 are also available.

At the completion of the test cycle, a report in PDF format can be exported to any location on the local network.

## References

1. Agilent IntelliQuant Software: For greater sample insight and simplified method development, Agilent publication, [5994-1516EN](#).
2. Agilent IntelliQuant Screening: Smarter and quicker semiquantitative ICP-OES analysis, Agilent publication, [5994-1518EN](#).
3. Fitted Background Correction (FBC) – fast, accurate and fully-automated background correction, Agilent Publication, [5991-4836EN](#).
4. Real-time Spectral Correction of Complex Samples using FACT Spectral Deconvolution Software, Agilent Publication, [5991-4837EN](#).