

Getting Started with Sample Scheduler

1 Click or tap elements on the **Start** Screen to view details about your laboratory's workload.

2 Manage your daily workload in the **Analyses** view, for example, create analyses, edit parameters in the **Details** pane, change vial position, and process analyses or sequences.

3 Filter your daily workload by state. Click or tap on a segment of the half-circle radar or the corresponding category above to view analyses with a specific workload state. Click or tap on the **Unassigned** button to view all unassigned analyses.

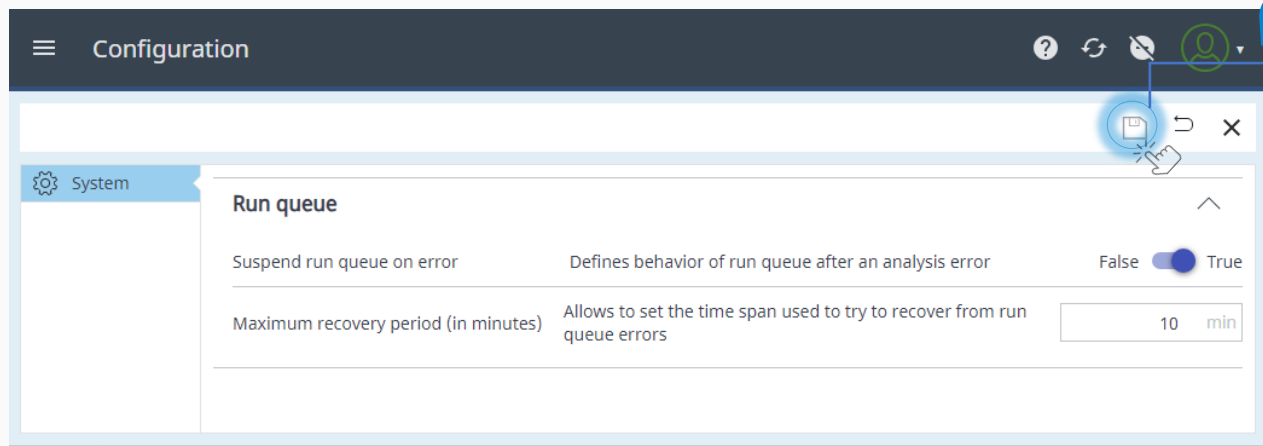
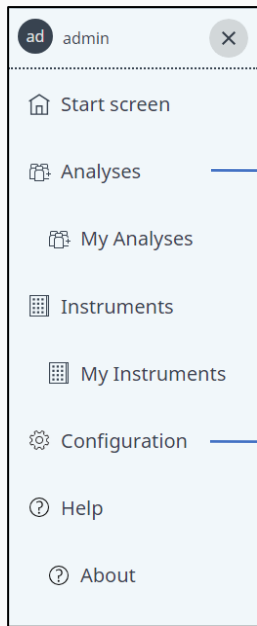
4 Click or tap the **My Instruments** button to view your currently used instruments for analysis requests with the status **Scheduled** or **Pending**.

Analyses toolbar

- Create Analyses
- Edit vial position
- View or edit analysis parameters
- Process analyses, e.g., schedule, stop, delete, or restart an analysis

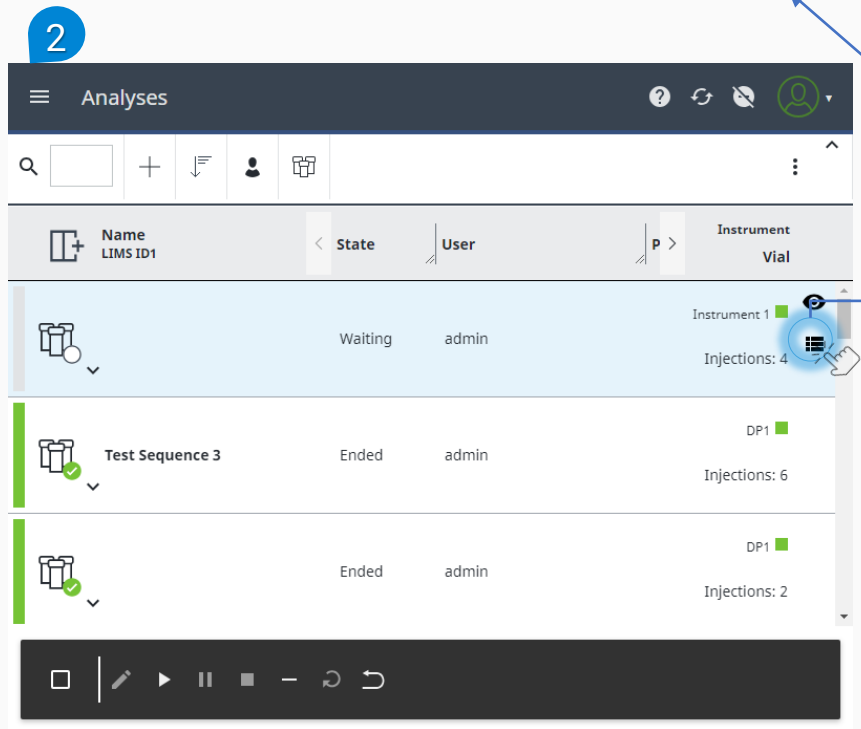
Analyses action toolbar

Getting Started with Sample Scheduler



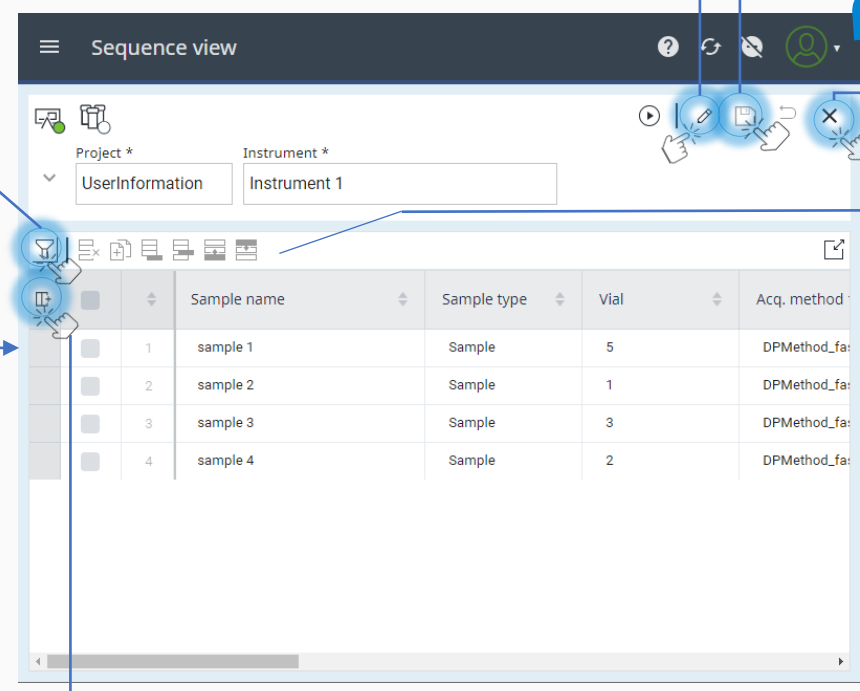
6 Save settings

Define run queue behavior



Filter sequence lines

Open Sequence view



Edit sequence
Save sequence

5 Close Sequence view

Perform actions

Expand Sequence view

Column chooser

2 Select a sequence in the **Analyses** view. Expand the window until the Sequence view button becomes available.

5 View details of the sequence. Edit individual sequence lines, or the entire sequence.

6 Click or tap the **Configuration** button to view and edit the run queue settings.