

README - Agilent ProSize data analysis software
Contents

1. Introduction

- 1.1 New Features with ProSize data analysis software revision 5.0.1.6
- 1.2 New Features with ProSize data analysis software revision 5.0.1.3
- 1.3 New Features with ProSize data analysis software revision 5.0.1.1
- 1.4 New Features with ProSize data analysis software revision 5.0.1.0
- 1.5 New Features with ProSize data analysis software revision 4.0.2.7
- 1.6 New Features with ProSize data analysis software revision 4.0.1.4
- 1.7 New Features with ProSize data analysis software revision 4.0.0.3

2. System Configuration

- 2.1 PC Hardware Requirements
- 2.2 Operating System requirements
- 3. Software Installation and Setup**
 - 3.1 Installation Instructions
 - 3.2 Uninstall Instructions

1 Introduction

This document provides last minute information and installation advice corresponding to the Agilent ProSize data analysis software.

1.1 New Features with ProSize data analysis software revision 5.0.1.6

- Protein Calibration Screen
 - Generate calibration curve for protein quantification.
 - Protein calibration data can be exported in PDF or CSV format.
- Calibrated Peak Table

1.2 New Features with ProSize data analysis software revision 5.0.1.3

- Displaying values for TIC, TIM and Total Concentration with the Peak table in PDF export on certain data types
- Traces summary aligned when the X-axis size scale chosen from PDF generation options

1.3 New Features with ProSize data analysis software revision 5.0.1.1

- Zipped Open Data File now appears for all users when data is open
- Recent Files will open when selected from file menu

1.4 New Features with ProSize data analysis software revision 5.0.1.0

- Author, Reviewer, and Approver visible on reports
- Enforce Approval Workflow ▪ Author, Reviewer, Approver

- Displays current status of approval state

- Data is no longer able to be edited after author has approved their changes
- Nomenclature has changed from "eSign" to "Lock" and "Un-sign" to "Unlock"
- Administrators now function as System Administrators ▪ No longer able to edit or view enhanced security data.
- Administrator can view raw data, not .db3 file
- Only able to create/disable users
- User no longer prompted to lock PDF files while being created
- PDF reports contain their file name.
- Audit trail updated to UTC timestamp with time zone offset.
- Event and Error Log modified to be in UTC
- All timestamps displayed in local time zone instead of the time zone the file was created in.
- User set to inactive and logged out if max number of login attempts met at any login screen in the software.
- All failed login attempts logged in the system event log
- Readability of event and audit logs improved
 - o Shows "To" and "From" columns instead of one large block of text
- Allows for printing of lock/unlock log on PDF report
 - o Prompts user for Settings screen being open
- When the user is changing a setting on a well, does not allow the user to close the software without a prompt
- Improved robustness of setting changes saved to the database
 - o Administrators are the only user type able to view the system event log

1.5 New Features with ProSize data analysis software revision 4.0.2.7

- RFU parameter displays correctly on PDF and CSV exports independent of the assay mode the user has selected in the past.
- User logged in as an administrator may edit any user account in the User Account Maintenance screen.
- Data event log shows all changes made to calibration curve by the user.
- User Account Maintenance screen displays 20 users instead of 15.
- 4.0.2.x will upgrade previously installed (and released) 4.0 versions of software.

1.6 New Features with ProSize data analysis software revision 4.0.1.4

- Remove RUO from the ProSize splash screen
- General usability enhancements
- Improved Enhanced Security user and login features
- Update number of users for ProSize Enhanced Security login

- Improved timestamp uniformity and consistency
- Sample method importing parameters corrected
-

1.7 New Features with ProSize data analysis software revision 4.0.0.3

- Rebranded software and User Manual to Agilent Technologies naming and images
- Installation location moved from C:\ProSize to C:\ProSize data analysis software.
- Enhanced security data used in place of 21 CFR part 11
- Added End User License Agreement (EULA) documentation to the software HELP menu.

2. System configurations

2.1 PC Hardware (minimum requirements)

The ProSize Data Analysis software tested requirements are as follows:

Processor: i5 or higher

RAM: Physical: 4 GB

Display: Min resolution of 1280x1024 or 1280x800 pixels

Hard disk: 500 GB recommended

2.2 Operating System requirements

The ProSize data analysis software has been fully tested and is supported to run on

- Microsoft © Windows 10 64 bit with **English (US)** language settings The ProSize data analysis software tested requirements are as follows:

Operating system: Microsoft © Windows 10 64 bit 1803 or later

Operating system language: English (US)

Operating system region settings: English(US) in default configuration

Microsoft .NET: 4.6.2 or higher

Adobe Acrobat DC: DC 19.012.0034 (English US) or higher required for reporting

The reporting function in the ProSize data analysis software requires Adobe Acrobat DC Reader version 19.012.0034 or later to be able to view and generate reports. All PCs supplied by Agilent Technologies will have this pre- installed. Reporting to .pdf format is the default.

3 Software Installation and Setup

3.1 Installation Instructions

The ProSize data analysis software installation program 'Setup.exe' is a Microsoft Windows application. You must have Windows 10 including latest updates installed prior to installing the ProSize data analysis software. To install the ProSize data analysis software, perform the following steps:

1. Start Windows.

2. Before installing please make sure you have administrative rights to install the software on your computer. You need to have an account with **administrative rights** to successfully install all required components.

3. Close all running programs, including all instances of any ProSize data analysis software subprogram.

4. Download the installation program from the following link:

<https://explore.agilent.com/Software-Download-ProteoAnalyzer-Prosize>

5. Select the Agilent ProSize data analysis software 'Register for download' icon.

6. Complete the Personal Data information and select the 'Submit' icon.

7. Select the Agilent ProSize data analysis software to download.

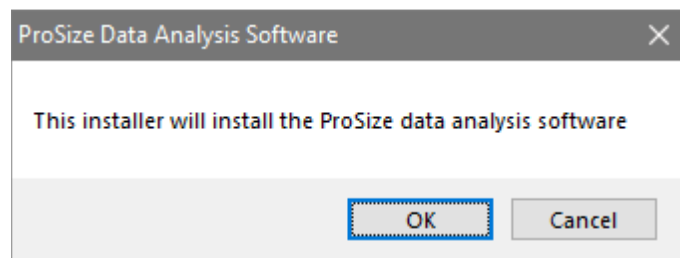
8. Open the 'ProSize data analysis software.zip' to locate the 'ProSize data analysis software.exe'.

9. Double left-click on the 'ProSize data analysis software.exe'

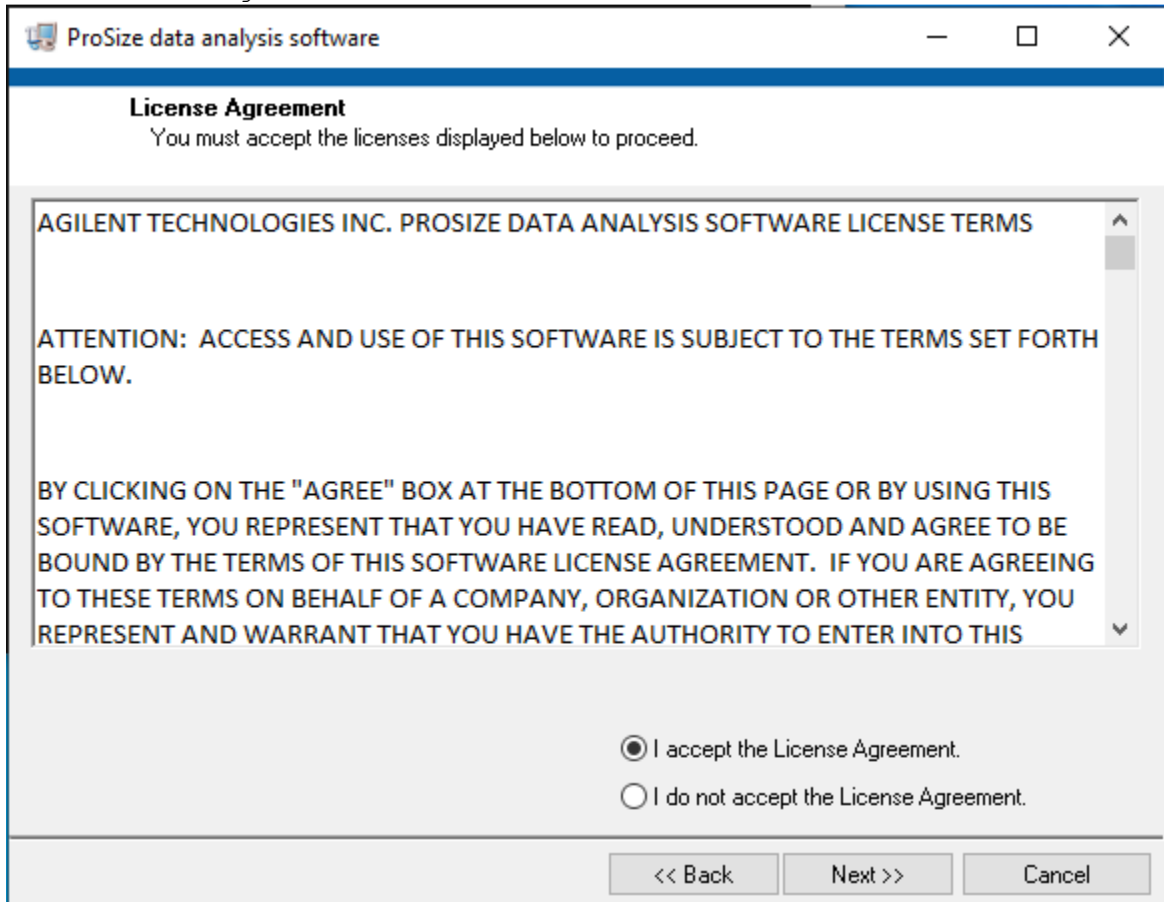
10. If a Windows security message appears, select 'Yes', to allow the program to

make changes on the computer.

11. When the following window appears select 'OK' to open a self-extracting zip file.



12. When the following window appears select 'I accept the license agreement', then 'Next' to begin installation.



Note: Installation of the ProSize data analysis software is only possible to drive C:\.

Installation to any other drive is not supported.

13. Select 'Next' to continue the installation, whenever needed.

14. Re-start the laptop to ensure successful software installation.

3.2 Uninstall Instructions

If after installing the ProSize data analysis software, you find it necessary to remove the software from your computer, perform the following steps:

Uninstall instructions for Windows 10:

1. From the settings panel, open 'System' and 'Apps & features'.

2. Select '**Agilent ProSize data analysis software**' from the list of apps that can be uninstalled by Windows.

3. Click on the 'Uninstall' button to uninstall the ProSize data analysis software.

Recorded data files are not deleted during an uninstallation.

If you encounter problems whilst upgrading the ProSize data analysis software, please remove the existing ProSize data analysis software installations. If this does not resolve the installation issues, please use the tool contained in the link below or set up the laptop with recovery media.

http://support.microsoft.com/mats/Program_Install_and_Uninstall/

© Copyright 2021 Agilent Technologies, Inc. Use, reproduction, and distribution are subject to approval of Agilent Technologies.