

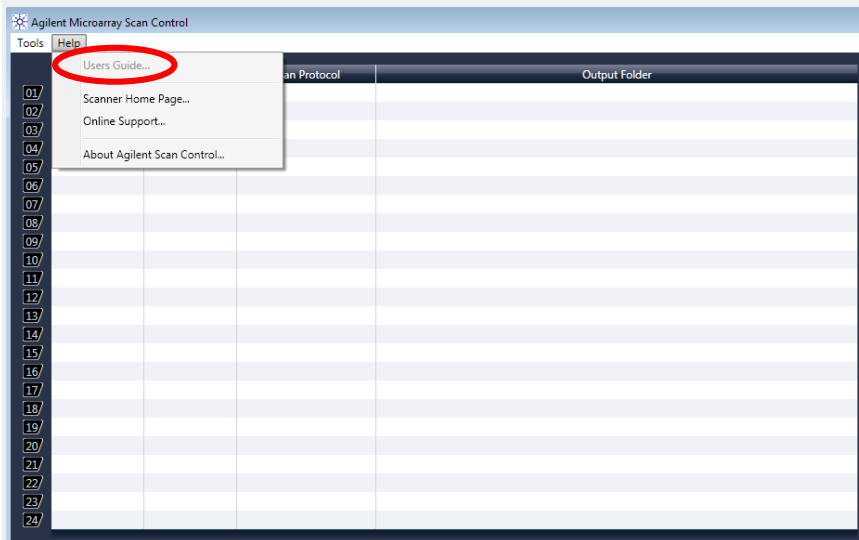
New Feature 230537 - User Guide Selection

Scan Control now includes a new User Guide selection feature that allows you to select the version of the User Guide to display based upon your scanner model, language, and regional preferences.

SETTING THE PREFERRED USER GUIDE

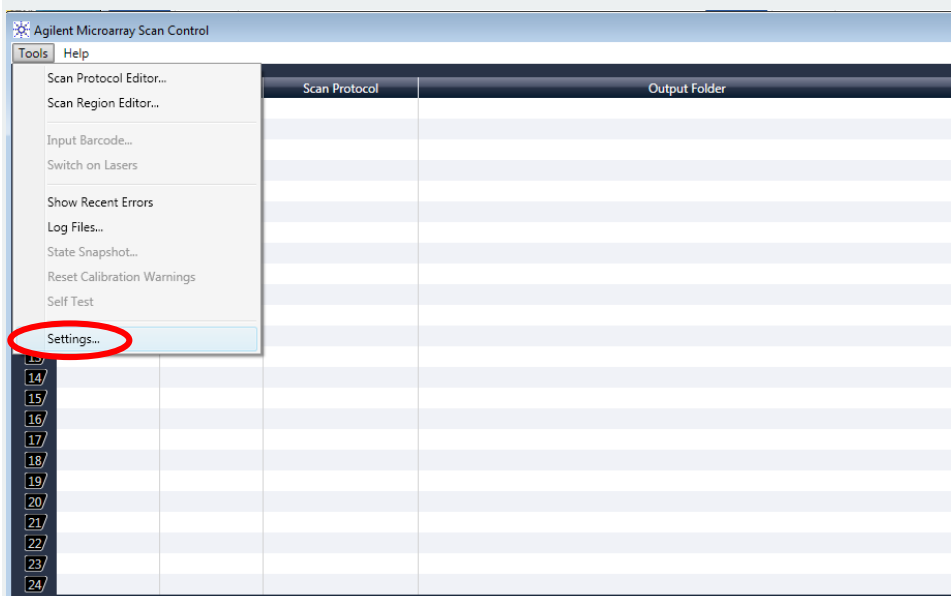
When you run Scan Control 9.1.9 for the first time you will need to select the preferred version of the User Guide that will be displayed when selecting **Users Guide** from the **Help** menu.

Until the preferred User Guide is selected, that item in the **Help** menu will be greyed out.

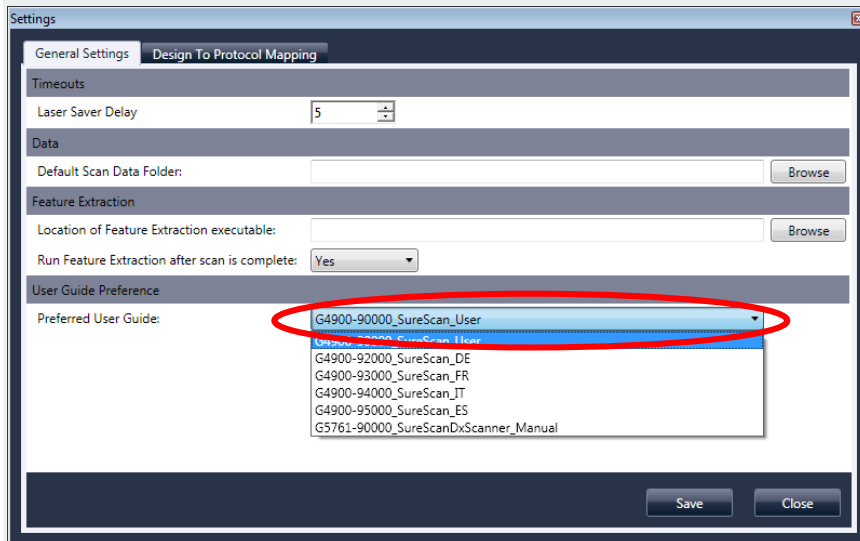


To select the preferred User Guide:

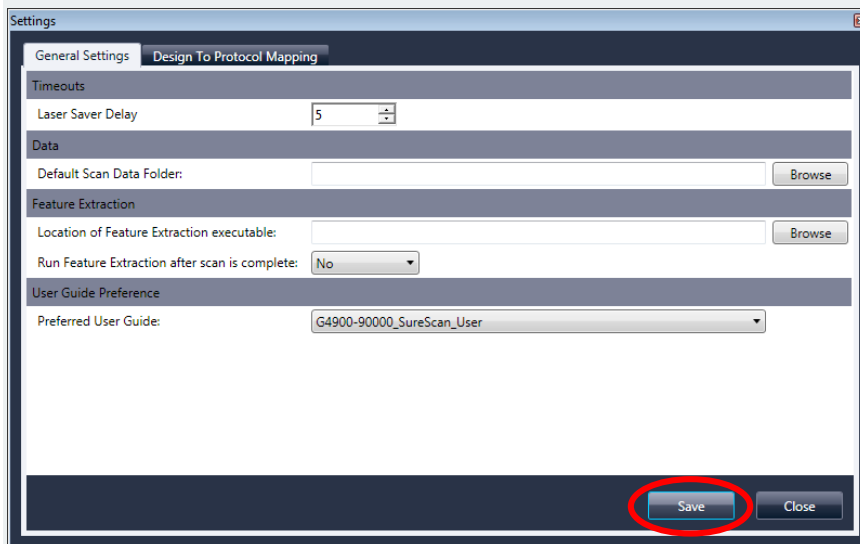
(1) Open the Settings dialogue box by selecting it from the **Tools** menu:



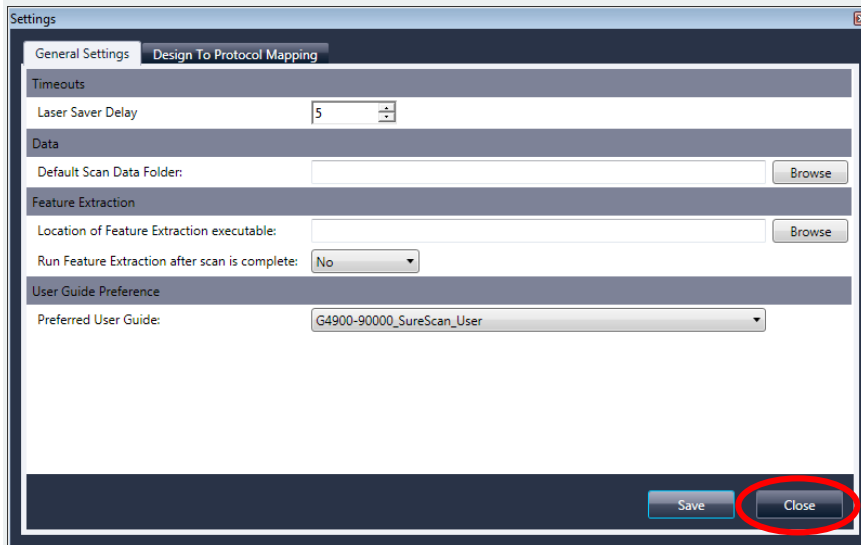
(2) Select the **Preferred User Guide** from the dropdown list.



(3) Click **Save** to confirm the selection.



(4) Exit the Settings dialogue box by clicking the **Close** button on the dialogue box.



The preferred User Guide is now set and is available from the Help menu for use.

NOTE: The preferred User Guide can be reset at any time by following the same process.