



MassHunter Data Acquisition Software for LC/MS

Installation Guide

Notices

Document Identification

D0113719
October 2024 Revision A.00

Copyright

© Agilent Technologies, Inc. 2024

No part of this manual may be reproduced in any form or by any means (including electronic storage and retrieval or translation into a foreign language) without prior agreement and written consent from Agilent Technologies, Inc. as governed by United States and international copyright laws.

Agilent Technologies, Inc.
5301 Stevens Creek Blvd.
Santa Clara, CA 95051

Software Revision

This guide is valid for the 12.1 revision or higher of the MassHunter Data Acquisition for **LC/TQ** until superseded.

This guide is valid for the 12.0 revision or higher of the MassHunter Data Acquisition for **LC/(Q)-TOF** until superseded.

Software Manufacturing



Manufactured for Agilent
Technologies
5301 Stevens Creek Blvd
Santa Clara, CA 95051

Warranty

The material contained in this document is provided "as is," and is subject to being changed, without notice, in future editions. Further, to the maximum extent permitted by applicable law, Agilent disclaims all warranties, either express or implied, with regard to this manual and any information contained herein, including but not limited to the implied warranties of merchantability and fitness for a particular purpose. Agilent shall not be liable for errors or for incidental or consequential damages in connection with the furnishing, use, or performance of this document or of any information contained herein. Should Agilent and the user have a separate written agreement with warranty terms covering the material in this document that conflict with these terms, the warranty terms in the separate agreement shall control.

Technology Licenses

The hardware and/or software described in this document are furnished under a license and may be used or copied only in accordance with the terms of such license.

Restricted Rights Legend

U.S. Government Restricted Rights. Software and technical data rights granted to the federal government include only those rights customarily provided to end user customers. Agilent provides this customary commercial license in Software and technical data pursuant to FAR 12.211 (Technical Data) and 12.212 (Computer Software) and, for the Department of Defense, DFARS 252.227-7015 (Technical Data - Commercial Items) and DFARS 227.7202-3 (Rights in Commercial Computer Software or Computer Software Documentation).

Safety Notices

CAUTION

A CAUTION notice denotes a hazard. It calls attention to an operating procedure, practice, or the like that, if not correctly performed or adhered to, could result in damage to the product or loss of important data. Do not proceed beyond a CAUTION notice until the indicated conditions are fully understood and met.

WARNING

A WARNING notice denotes a hazard. It calls attention to an operating procedure, practice, or the like that, if not correctly performed or adhered to, could result in personal injury or death. Do not proceed beyond a WARNING notice until the indicated conditions are fully understood and met.

In This Guide

This guide provides instructions to install MassHunter Data Acquisition software in these configurations:

- Workstation (standalone, no content management)
- Networked Workstation (networked, with content management on separate server)

NOTE

A Networked Workstation requires an OpenLab Server/ECM XT or ECM 3.x with OpenLab Shared Services Server. These server products provide a central secure file storage for scientific data.

This page intentionally left blank.

Contents

1 Preparation 7

Prepare configuration options 8

Uninstall previous versions of MassHunter software 9

2 Installation 11

Install MassHunter Data Acquisition 12

Install Compound Database Services (Networked Workstation Only) 18

Run Software Verification 19

Firmware and Embedded Software (ESW) Updates 20

3 OpenLab Control Panel Initialization 21

Getting and Installing the License 22

To get a license from SubscribeNet 24

To get a license offline 26

Adding a License 27

Create Initial Project 29

Set storage path 34

Import Quantitative Analysis report templates 38

Initialize instrument and start MassHunter Acquisition 40

Next Steps 41

User Documentation 41

Agilent Community 41

This page intentionally left blank.

1

Preparation

This chapter describes the required steps to install MassHunter Data Acquisition software.

Prepare configuration options **8**

Uninstall previous versions of MassHunter software **9**

MassHunter acquisition software has two possible configurations:

- **Workstation** (standalone system with no content management) or,
- **Networked Workstation** (client computer with content management on a separate server)

Prepare the MassHunter Workstation computer the same way, regardless of the configuration.

Prepare configuration options

To simplify installation of the MassHunter acquisition software, decide on workstation or networked configuration before beginning the actual software installation.

- 1 Create an account on the PC with local administrative privileges to run the installation.
- 2 To allow the successful installation and activation of all components, make sure that the LAN cable is connected and a network is available. A local network is sufficient.

For Networked Workstation, a separate network connection is required to connect to the OpenLab Server/ECM XT or the ECM 3.x with OpenLab Shared Services Server.

- 3 If needed, disable any antivirus software during the installation. See the GC/MS and LC/MS MassHunter Workstation Setup Guide for Windows 10 or 11 for more information.
- 4 Ensure that Windows Date & time is set correctly for the local time zone before installation.

CAUTION

Following installation, it is not possible to modify the Date & time settings to a date and time earlier than the actual installation date and time. Doing so may have adverse effects on OpenLab Shared Services.

- 5 Check Agilent SubscribeNet (<https://agilent.subscribenet.com/>) for the latest software updates or revisions for installation packages, software products, and instrument firmware/embedded software (ESW). For additional information, see **"Firmware and Embedded Software (ESW) Updates"** on page 20.

Uninstall previous versions of MassHunter software

Before installing software, it is required to uninstall previous versions of:

- MassHunter LC/MS TQ Data Acquisition software
- MassHunter LC/MS TQ Data Acquisition for Ultivo
- MassHunter LC/MS TOF/Q-TOF Data Acquisition software
- MassHunter Quantitative Analysis software

NOTE

MassHunter Qualitative Analysis software does not need to be uninstalled to continue.

- 1 Close all MassHunter Workstation programs, including the Data Acquisition, Qualitative Analysis, Quantitative Analysis, and Report Builder programs.
- 2 Open Windows Control Panel.
- 3 Click **Programs and Features**.
- 4 Find and click the desired software to uninstall. The version number is listed after the program.
- 5 Click **Uninstall**.
- 6 Repeat steps 4 and 5 as needed.
- 7 Reboot the computer.

The computer is now ready to have the software reinstalled.

WARNING

For Networked Workstations only, ensure the OpenLab Server/ECM XT server/ECM 3.x server is installed and available. If not, reach out to your local Agilent sales and support contact: <https://www.agilent.com/en/support>

This page intentionally left blank.



2 Installation

This chapter describes how to install the Agilent MassHunter Data Acquisition software and its associated programs and services.

- Install MassHunter Data Acquisition **12**
- Install Compound Database Services (Networked Workstation Only) **18**
- Run Software Verification **19**
- Firmware and Embedded Software (ESW) Updates **20**

Follow these steps regardless of MassHunter Workstation configuration.

For Networked Workstations, only the OpenLab Shared Services user with the System Administrator role is able to complete the MassHunter Data Acquisition installation.

Install MassHunter Data Acquisition

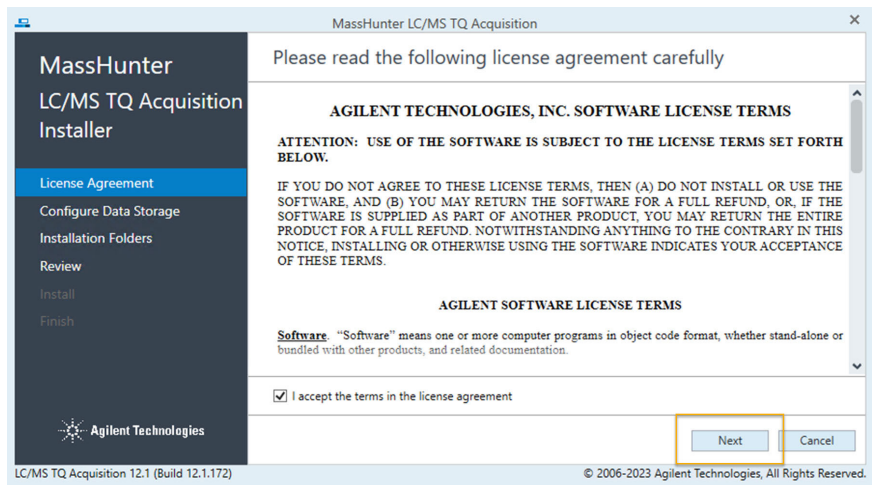
NOTE

The screenshots provided may be based on instrument installation choices. The steps outlined in the following process remain consistent, regardless of any minor interface discrepancies.

NOTE

Before installing the Agilent MassHunter Data Acquisition software, uninstall any previous versions. See [“Uninstall previous versions of MassHunter software”](#) on page 9.

- 1 Install the software to a local drive using installation media:
 - For Triple Quadrupole installation, run the setup program **SetupMH.exe**.
 - For TOF/Q-TOF installations, run the setup program **SetupQTOF.exe**.
- 2 Read and agree to the **License Terms** and mark the check box next to **I accept the terms in the license agreement**.
- 3 Click **Next**.



CAUTION

Once the Data Storage Configuration has been set and installed, this setting is safely changed only by removing the software and deleting the OLSS databases that have been installed, then reinstalling.

Re-imaging the PC is the safest way to change the Data Storage Configuration.

- If OpenLab Shared Services have never been installed on the PC, a prompt for the data storage type displays. Configure the data storage type as appropriate, and then click **Next**.

The choices are:

- Workstation** - Files are stored on the local file system with no content management.
- Networked Workstation** - Files are stored on an external OpenLab content management server.

Workstation

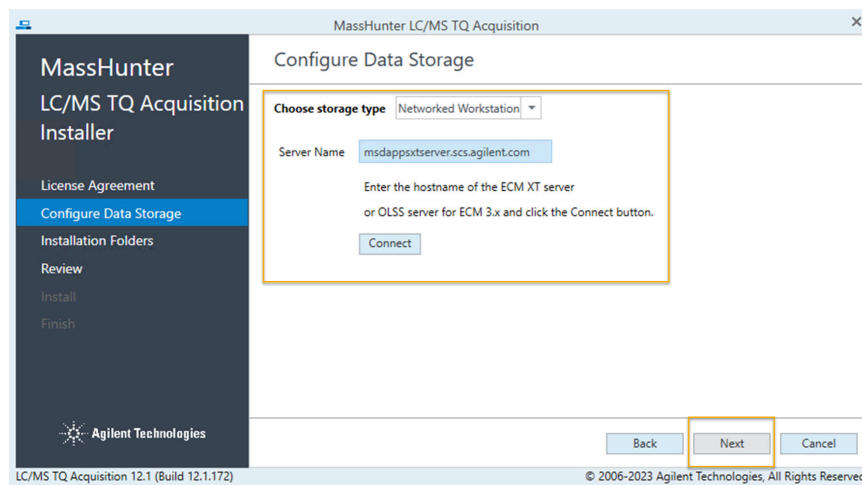
All MassHunter files (such as data, methods, studies, report templates, and reports) are stored on the local file system. For Storage Path, enter or browse for the folder to store all user-generated data, including methods and reports. Enter a Password for use with the Datastore database that hosts the Compound Database Service, a core component of the Optimizer workflow. Make sure to remember it for future installations.

Installation

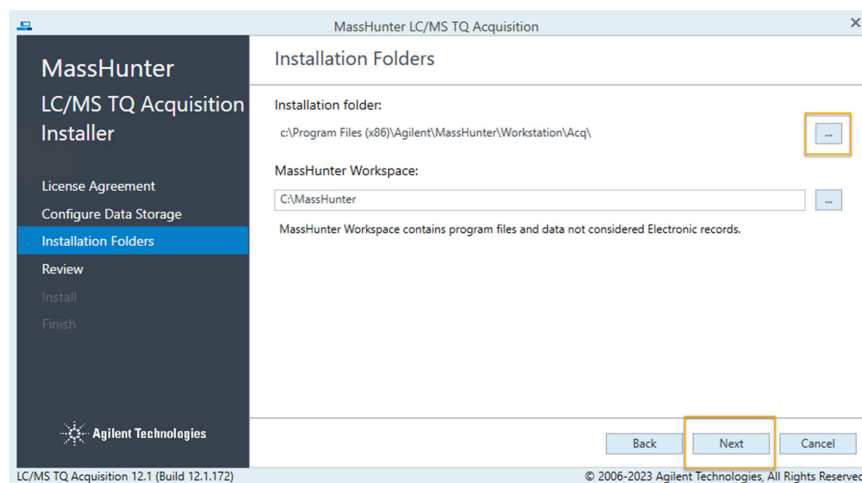
Install MassHunter Data Acquisition

Networked Workstation

All MassHunter files (such as data, methods, studies, report templates, and reports) will be stored on an external OpenLab Server/ECM XT server/ECM 3.x server. For this configuration type, enter the name of the server to connect to then click **Connect** to verify the connection to this server.



- 5 In the Installation Folders page, select the folders for the installation files and MassHunter Workspace, and then click **Next**. The workspace is used to store the instrument configuration, log files, and the Chemical Data Dictionary.



Installation

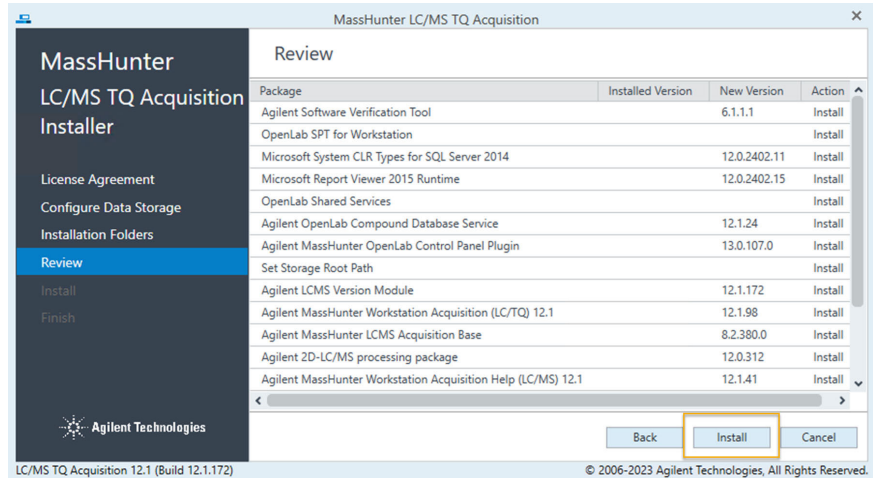
Install MassHunter Data Acquisition

NOTE

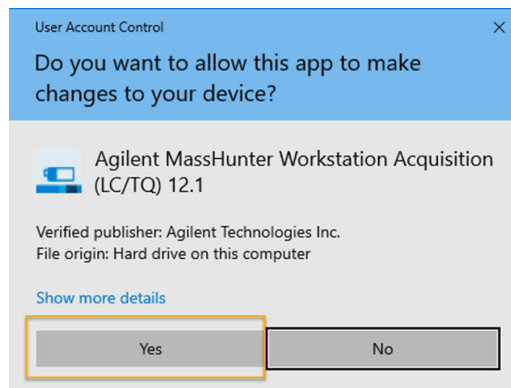
If a MassHunter application has been installed previously, the option to select a different MassHunter Workspace is disabled and cannot be changed.

- 6 In the **Review** page, review the applications that will be installed, and then click **Install**.

The installation of the required packages starts.



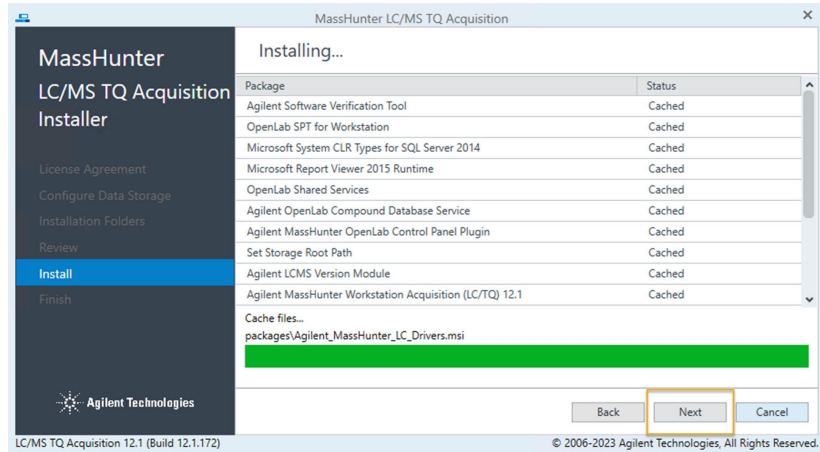
- 7 If prompted whether to allow the publisher to make changes to the device, click **Yes**.



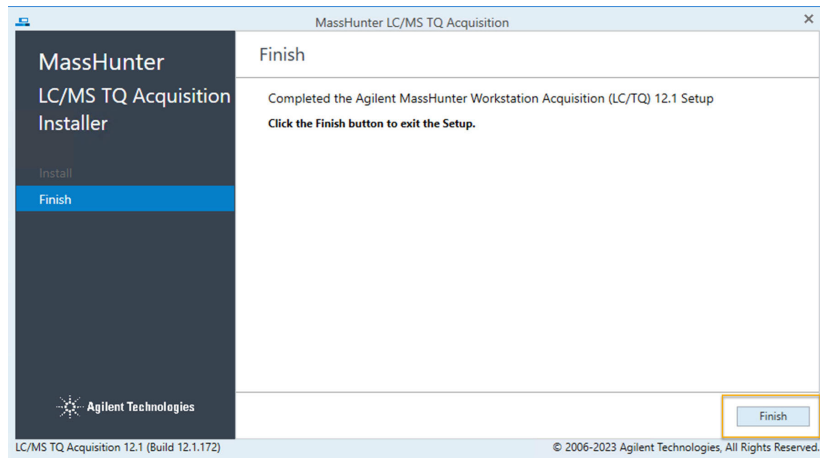
Installation

Install MassHunter Data Acquisition

The installation continues, displaying the progress of the installation.



8 Click **Next** to continue the installation as prompted.

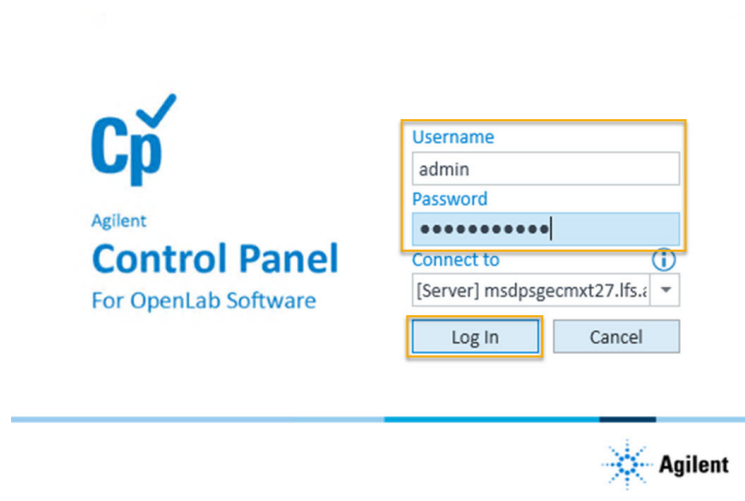


- If prompted, select **Restart the computer now** each time it displays. This restart can happen multiple times. The computer is restarted immediately after clicking **Next** or **Finish**.

Installation

Install MassHunter Data Acquisition

- For networked workstations, if prompted during installation, enter a Username and Password, then click **Log In**.



- Click **Next** or **Finish** to continue the installation for each prompt.
- 9 When the installation is complete and the computer reboots, the Control Panel icon is displayed on the desktop.



Install Compound Database Services (Networked Workstation Only)

If **Networked Workstation** is selected, install the Compound Database Services on the server side.

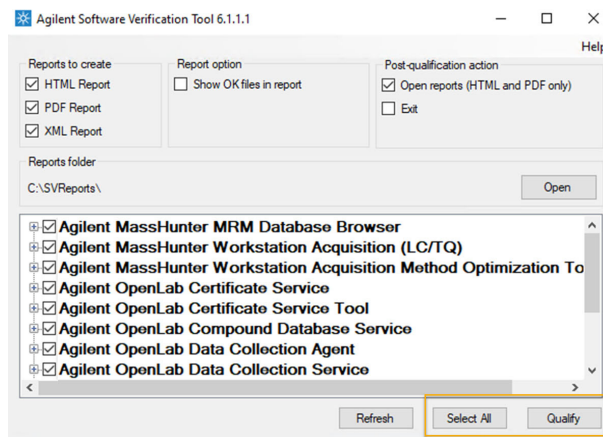
- 1 If Networked Workstation is selected, install the Compound Database Service Software:
 - a For ECM XT/OpenLab Server configuration, double-click **CompoundDBInstaller** on the Compound Database installation media. The installation happens on that server.
 - b For ECM 3.x and OpenLab Shared Services Server configuration, click **CompoundDBInstaller** on the Compound Database installation media. The installation happens on the OLSS server.
 - c Follow the instructions that are presented.

Run Software Verification

The Software Verification Tool (SVT) provides evidence that the system has been built and installed correctly.

- 1 From the Windows Start menu, go to **Agilent Technologies > Software Verification Tool**.
- 2 Select the check boxes for each component that needs to be verified. Click **Select All** to qualify all components.
- 3 Click **Qualify**.

The system will run the application and generate a Software Verification Report.



- 4 If the report indicates failure, verify the computer requirements and reinstall the data system.

Do not use the system until the Software Verification Report gives a **pass** result.

Software Verification Report			
Date:	Wednesday, March 27, 2024	Time:	12:17:17 PM [UTC -07:00:00]
Windows User Name:	admin	Base Revision Number:	1.7.0
Install Type:	Agilent OpenLab	Additional Packages:	NA
Host Name:	DESKTOP-655PFQM		
Product Name:	Agilent OpenLab Data Collection Agent		
Base Reference File Name : DCA_IQT_Ref.xml			
Summary :			
Overall Evaluation of Installation Check : PASS			
File Report Summary:			

Firmware and Embedded Software (ESW) Updates

NOTE

If an error is received during installation, review the package information for the software and instrument. Always use the most recent Firmware or Embedded Software installation package.

- 1 To review the package information for the software and instrument, go to <https://agilent.subscribenet.com/>.
- 2 Log in to SubscribeNet using your login ID and password.
- 3 Review the version installed compared to the latest packages available.
- 4 If needed, download the latest ESW/Firmware package appropriate for your instrument and install.

If you have additional questions, contact your local Agilent sales and support contact: <https://www.agilent.com/en/support>.

3

OpenLab Control Panel Initialization

- Getting and Installing the License 22
 - To get a license from SubscribeNet 24
 - To get a license offline 26
 - Adding a License 27
- Create Initial Project 29
 - Set storage path 34
 - Import Quantitative Analysis report templates 38
 - Initialize instrument and start MassHunter Acquisition 40
- Next Steps 41
 - User Documentation 41
 - Agilent Community 41

This chapter describes the steps to take to initialize the OpenLab shared services control panel when running MassHunter Data Acquisition software for the first time. If connecting a Networked Workstation to an existing OpenLab Server/ECM XT server/ECM 3.x server, some steps might already be done.

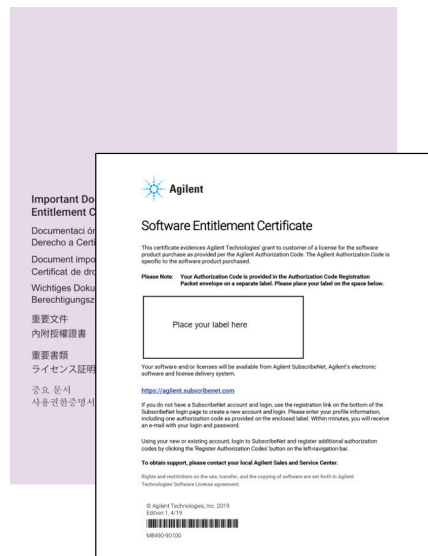
Getting and Installing the License

There are two ways to get a license:

- From SubscribeNet (<https://agilent.subscribenet.com/>)
- Offline (from an Agilent representative)

To begin, locate the following information:

- The authorization code from the labels provided in the lavender envelope along with the Software Entitlement Certificate that had additional information on registering an authorization code.



If you did not receive a lavender envelope with the product, contact your vendor or internal support at subscribenet_support@agilent.com.

- The host name and MAC address of the license server.
 - For Workstations, this information comes from the PC where MassHunter is installed.
 - For Networked Workstations, this information comes from the server running OpenLab Server/ECM XT.
 - For Networked Workstations with ECM 3.x, this information comes from the server running OpenLab Shared Services.

OpenLab Control Panel Initialization

Getting and Installing the License

To retrieve the MAC address, open the Control Panel and browse to the **Administration > Licenses** section. Use the **Copy MAC Address or Save MAC Address** function to obtain the MAC address for license generation.

NOTE

If any changes are made to the computer name or domain after the license is installed, remove the license. A new license will need to be created in SubscribeNet, downloaded, and installed.

NOTE

If the network adapter that provides the MAC address used during license creation is removed from the machine, the license will no longer be valid. A new license will need to be generated with a currently available MAC on the license server.

NOTE

Licenses can be obtained at a future date. The included startup license enables full use of MassHunter programs for 60 days.

To get a license from SubscribeNet

An Internet connection is needed to access SubscribeNet. If you do not have one, see **“To get a license offline”** on page 26.

- 1 If you are new to SubscribeNet:
 - a Go to <https://agilent.subscribenet.com/control/agil/AgilRegisterToAccount> to register the product with SubscribeNet.
 - b On the registration page, enter the authorization code from the label and complete the profile information (required fields are marked with an asterisk *).

The email address that you enter will become your login ID.
 - c Click **Submit**. The system will generate and display an account name for you. SubscribeNet will send a welcome email with your login ID and password.

- 2 Go to <https://agilent.subscribenet.com/>.

- 3 Log in to SubscribeNet using your login ID and password.

Once you log in, you can use the online user manual link for help with any questions you have.

- 4 If you are an existing SubscribeNet user:
 - a If you have more than one account, select the SubscribeNet account associated with this authorization code.

- 5 In the navigation pane, select **Register Authorization Code**.

This option allows you to enter your new authorization code and make available the new license entitlements.

- 6 In the navigation bar on the left side of the page, select **Generate or View licenses**.

- 7 Follow the prompts to generate your new license.

You will be prompted for the HOST NAME of the computer. The host name that you enter must match with the network name of the computer where the Control Panel is running. Do not include any DNS suffix (*domain.com*) references in the entered machine name.

OpenLab Control Panel Initialization

To get a license from SubscribeNet

When the system generated the license, view its details, then click **Download License File**. Save the license file to your computer and to a backup location (such as a portable storage device).

Use your login ID and password when you revisit the Agilent SubscribeNet site to regenerate a license file, add new authorization codes, or further configure the license for your system.

To get a license offline

If you are unable to generate a license, contact your nearest Agilent technical support office. Agilent collects the necessary information from you to create a license account on your behalf. For phone support in your region, call the sales and service number for your region.

1 Collect profile information:

Your account name will be your company name and Lab name separated by a comma. Employee information provided here will be used to define the first administrator of your account for future access to the system as required.

- Company Name
- Lab/Department Name
- First Name
- Last Name
- E-mail address
- Job
- Title
- Phone number
- Address, City, State/Province, Postal Code, Country

2 Collect Authorization Code(s).

The authorization code is an alphanumeric code provided on a label that is enclosed in a lavender envelope. If you have received more than one code you must provide all codes to ensure that all ordered licenses are granted to your account.

3 Contact your Agilent representative and provide the collected information for Agilent to generate a license through SubscribeNet.

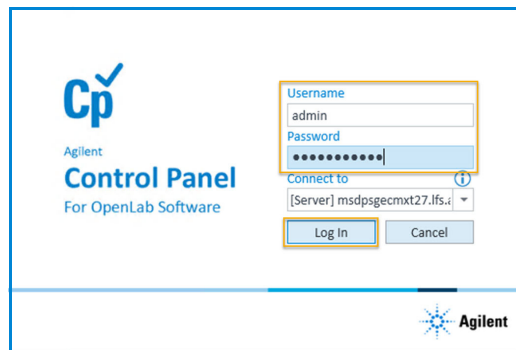
Once the license file is generated, it will either be sent to your shipping address, or your local Agilent-certified service professional will deliver it in person.

Adding a License

- 1 On the desktop, double-click the Control Panel icon.



For Networked Workstation, the server login dialog box is displayed. Log in as a user with an account on the OpenLab Server/ECM XT server/ECM 3.x server to continue.

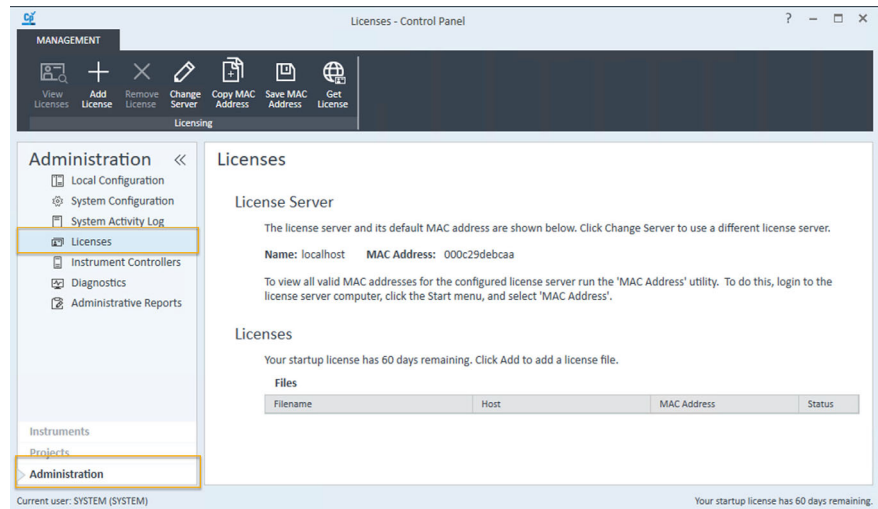


The Control Panel initializes and then opens.

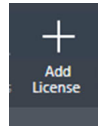
OpenLab Control Panel Initialization

Adding a License

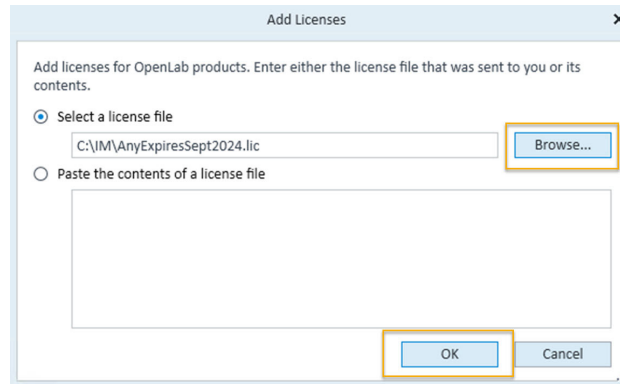
- 2 In the navigation panel, select **Administration > Licenses**.



- 3 Click Add License.



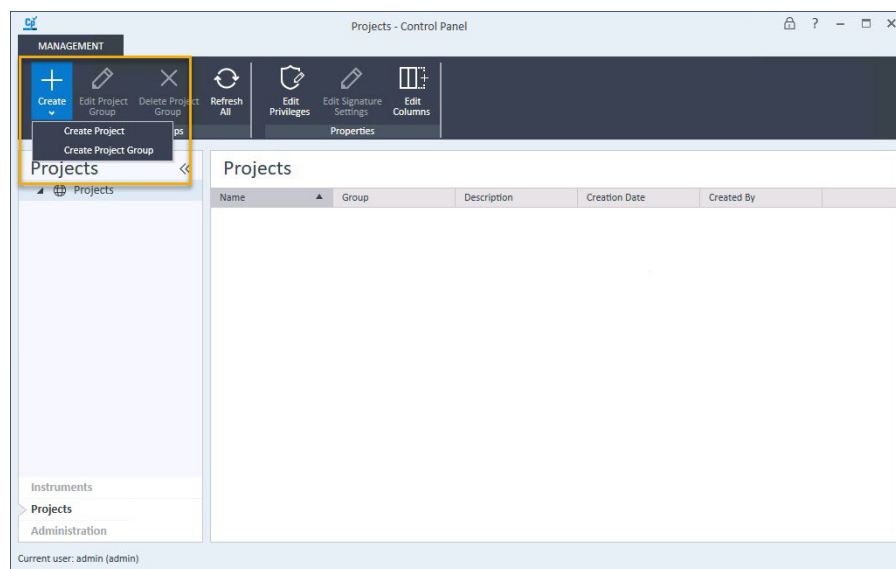
- 4 Browse to select a license file, then click **OK**.



Create Initial Project

In this example, the Storage path is set to C:\Projects.

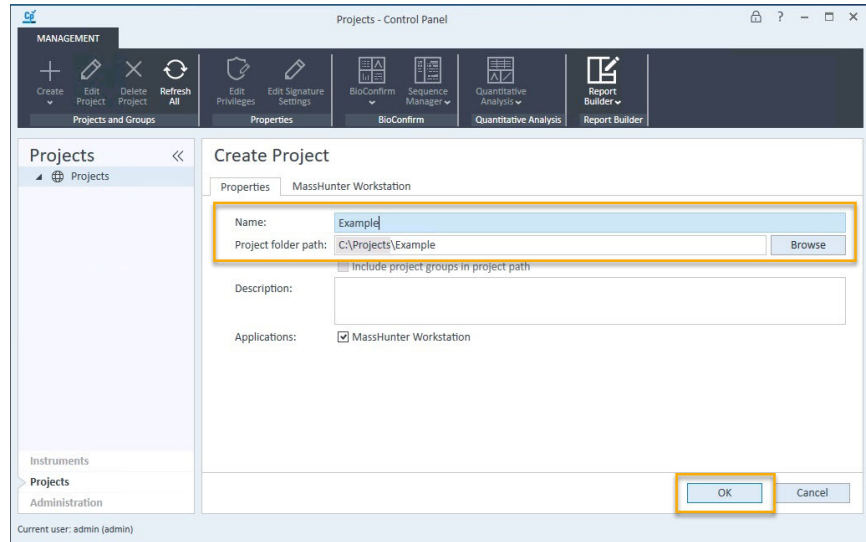
- 1 In the navigation pane, select **Projects**.
- 2 On the ribbon, click **Create > Create Project**.



- 3 In the **Properties** tab, specify a **Name**, **Project folder path**, **Description**, and the **Application (MassHunter Workstation)**. Click **OK**.

WARNING

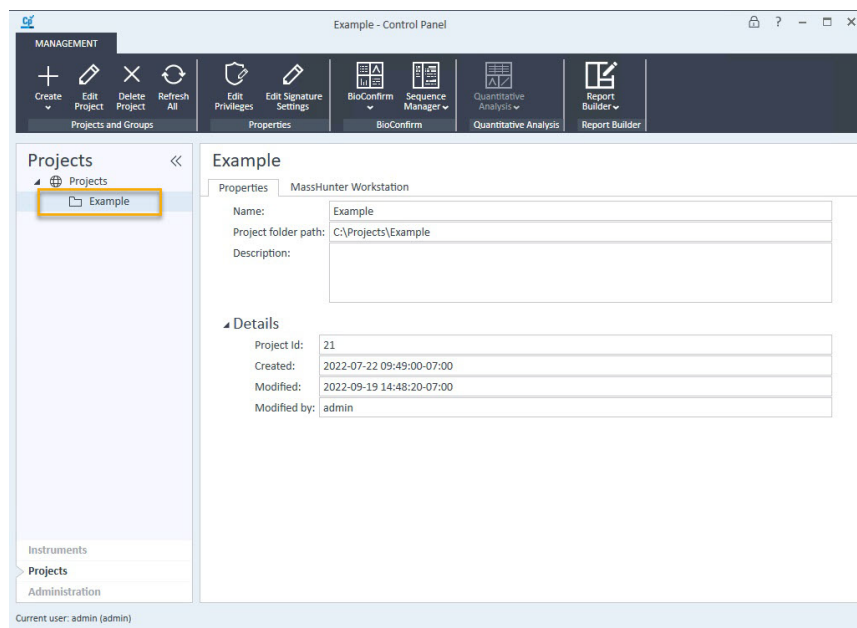
If the Project folder path is C:\ with no defined path, do not proceed with the remaining procedures in this section. If the project root is undefined the installation will not work.



OpenLab Control Panel Initialization

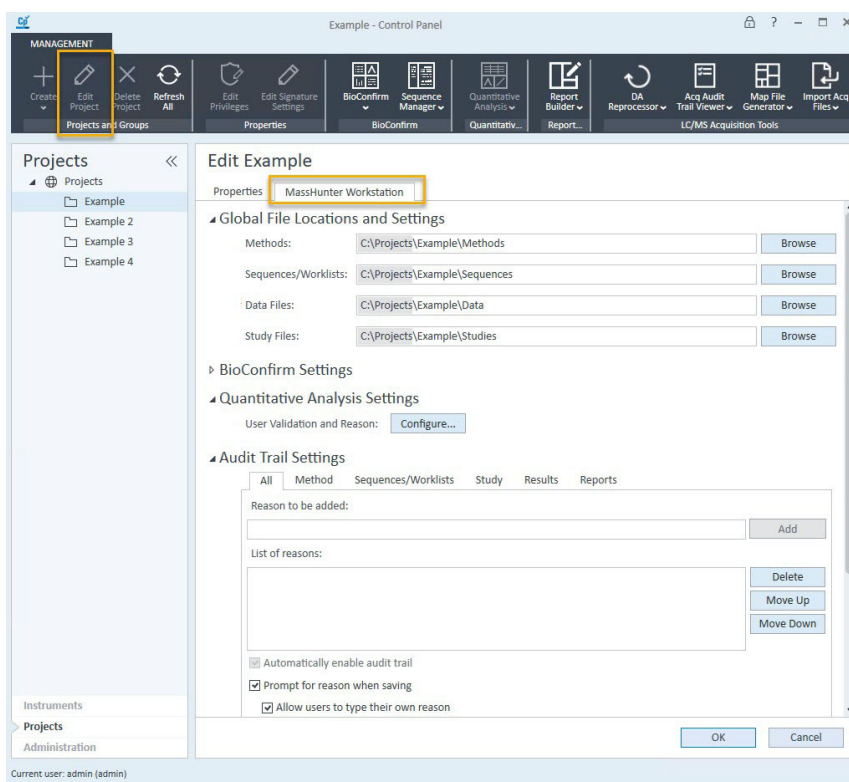
Create Initial Project

- 4 In the navigation pane, select the **Project** that was just created and verify the values.

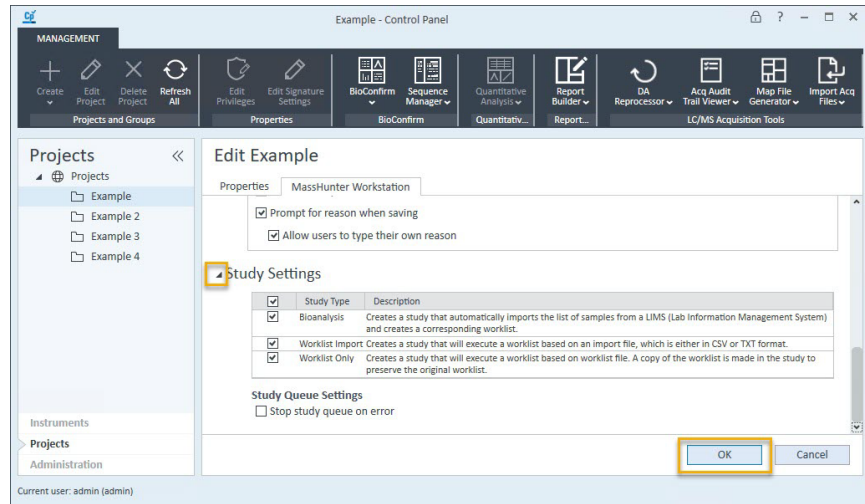


5 On the Ribbon click **Edit Project**. In the **MassHunter Workstation** tab:

- Confirm the **Global File Locations and Settings**.
- In the **All** tab, select **Prompt for reason when saving** to require the user to enter a reason when saving MassHunter objects. The ability to require the user to enter a reason for specific MassHunter objects is available. If **Allow users to type their own reason** is selected, users are allowed to manually enter a reason.
- If needed for this project, under **Audit Trail Settings**, add default reasons for methods, worklists, studies, results, and reports on the appropriate tab. The ability to add general reasons to the **All** tab is available, which will display in all contexts.



- 6 Expand **Study Settings**. Several different types of studies are enabled by default. Mark or clear the study types that are used with this project.



- 7 Click **OK**.

Set storage path

NOTE

This section does not apply to ECM XT/OpenLab Server.

ECM provides a four-level data storage model with the structure of Location, Cabinet, Drawer, Folder (LCDF). The Location, Cabinet, Drawer, and Folder names comprise the path name (called either LCDF path or Remote Data Path) of the storage location. Data is stored at the Folder level only.

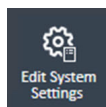
To set a valid project path in ECM 3.x to follow the LCDF file structure, the **Storage path** during system configuration must be at the "Location" level of ECM.

You can only change this folder when you do not have projects in the system. If you have projects, you must delete them before you can change the **Storage path**.

There is no localization support with ECM 3.X storage.

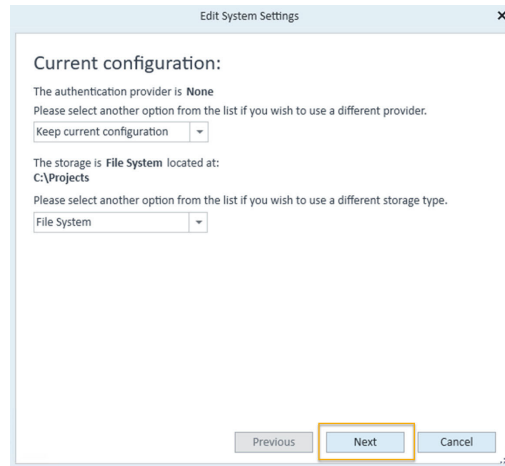
This procedure removes all existing users and groups from the system.

- 1 In the navigation pane, select **Administration**.
- 2 Select **System Configuration**.
- 3 On the Ribbon click **Edit System Settings**.

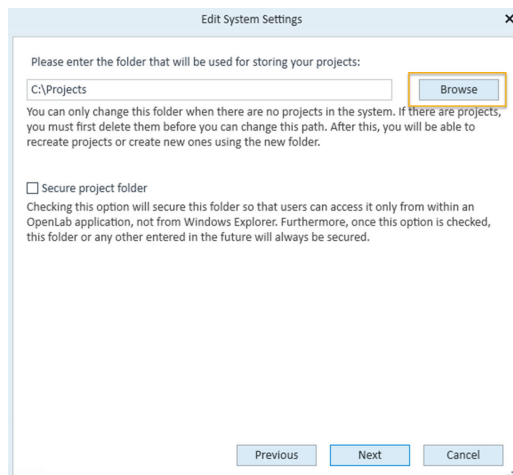


Set storage path

- 4 If you chose ECM as the authentication provider, provide the Authentication Parameters. Click **Next**.



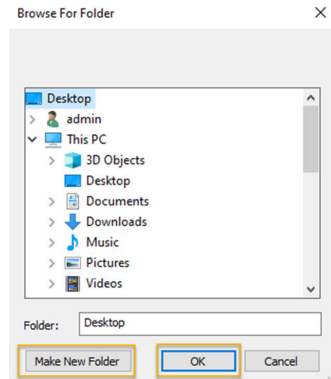
- 5 Click **Browse** to change the folder that is used for all projects.



OpenLab Control Panel Initialization

Set storage path

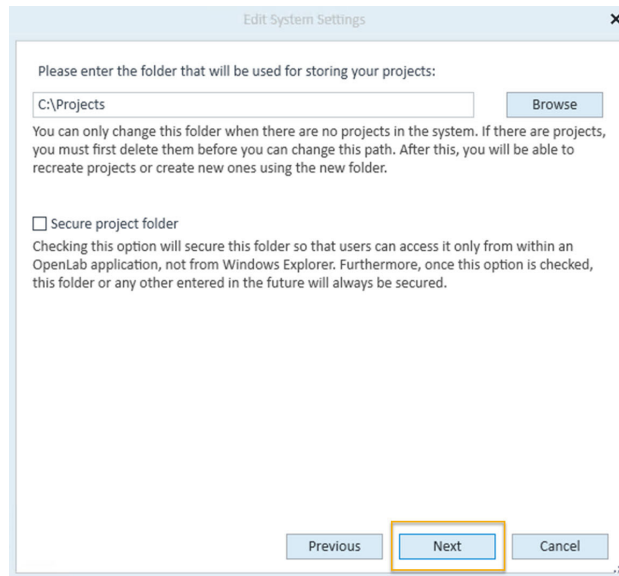
- 6 Select a storage folder. To create a folder, click **Make New Folder**. When a folder is selected, click **OK**. This folder is at the location level.



- 7 Click **Next** to use the selected folder.

CAUTION

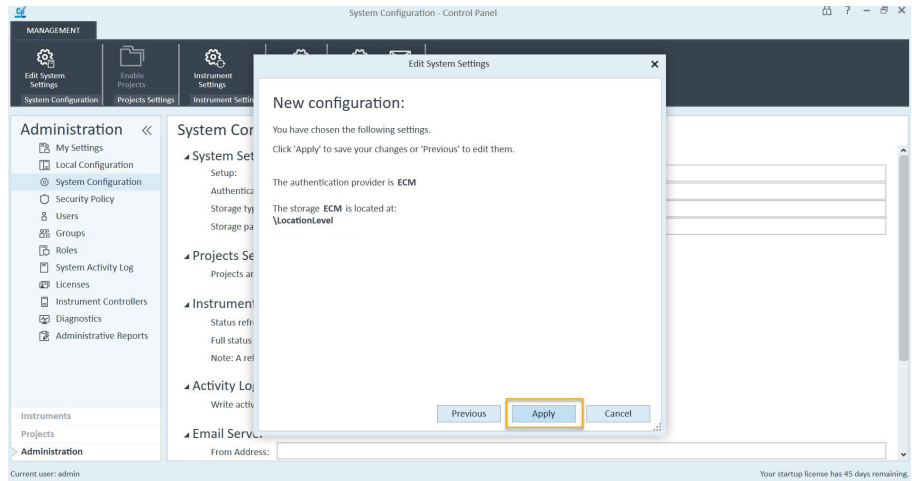
Do not select Secure project folder. This option is not compatible with MassHunter Workstation currently.



OpenLab Control Panel Initialization

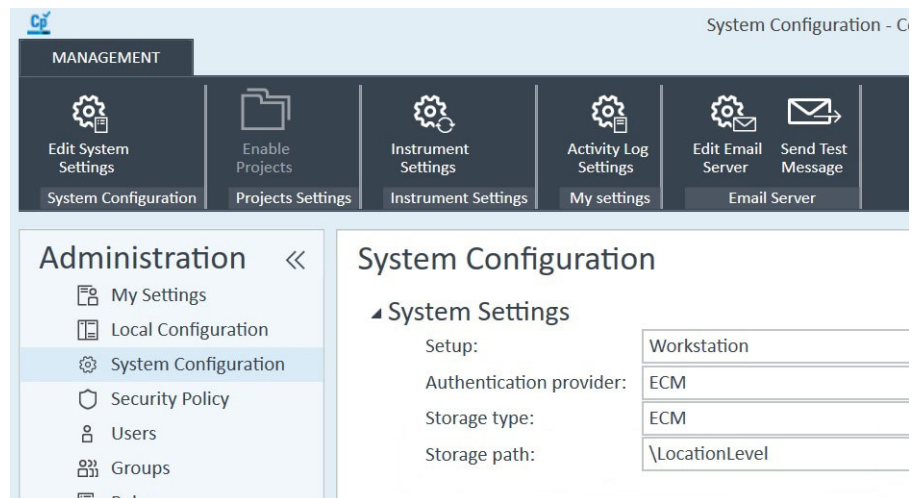
Set storage path

- 8 Click **Apply** to save the changes.



- 9 Click **OK** in the Confirmation message.

The **Storage path** is changed to `\LocationLevel`.



Import Quantitative Analysis report templates

NOTE

Quantitative Analysis report templates must be imported to the MassHunter project before Quantitative reports can be generated.

Workstation configuration

- 1 Open File Explorer.

Copy the contents of the folder **D:\MassHunter\Report Templates\Quant** into the folder **D:\Projects\projectname\Report Templates**. Make sure to copy all subfolders.

Networked Workstation configuration

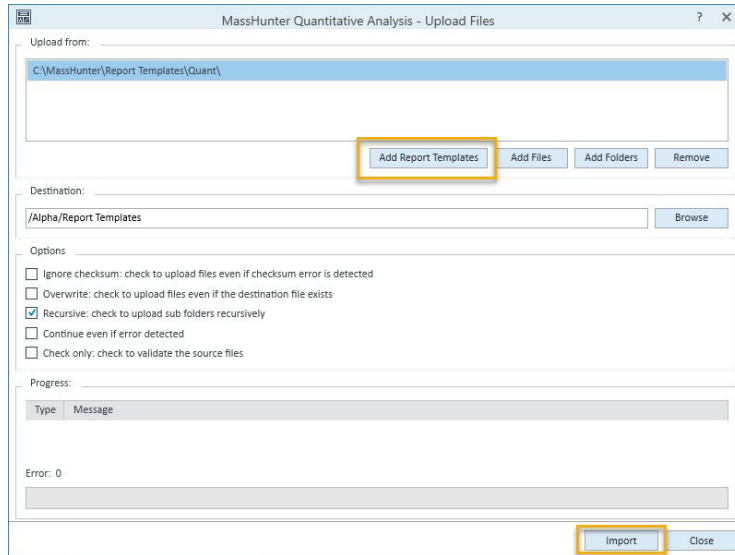
- 1 From the Start menu, click **Agilent MassHunter Quantitative > Quantitative Analysis Tools**.
- 2 In the Tools folder, double-click **Upload Files**. When prompted, log in to the server as a user who has the privilege to upload Quant report templates, and has permission to modify the content of the project.
- 3 Select the destination project for the report templates.



OpenLab Control Panel Initialization

Import Quantitative Analysis report templates

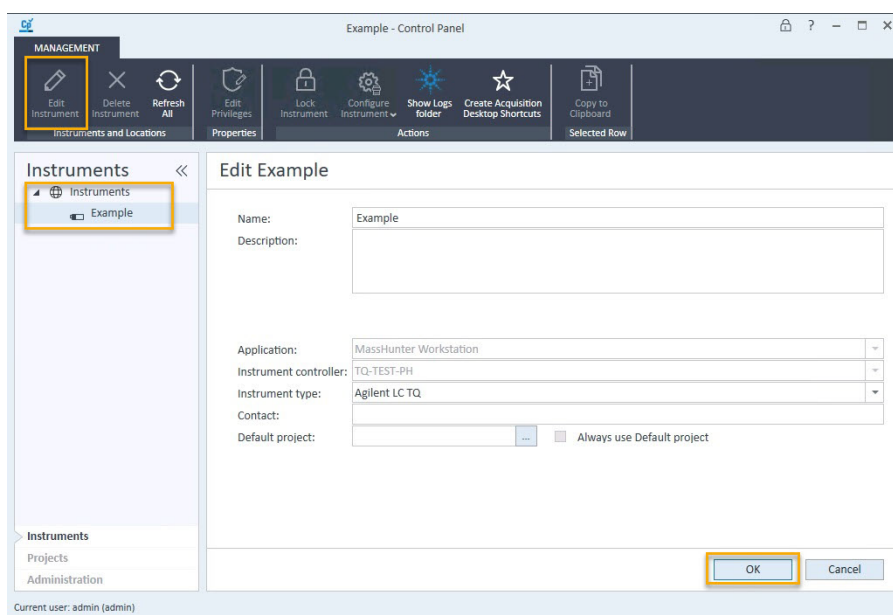
- For **Upload from**, click **Add Report Templates** to automatically select the report templates folder. This folder exists on the Networked Workstation only if MassHunter Quantitative Analysis is installed.



- For **Destination**, create a folder in the Project folder for the report templates, such as **Report Templates**.
- Mark **Recursive: check to upload sub folders recursively**.
- Click **Import** to begin the import.

Initialize instrument and start MassHunter Acquisition

- 1 In the navigation pane, select **Instruments**.
- 2 Under Instruments, select the name of the instrument to edit.
- 3 On the Ribbon, click **Edit Instrument**.
- 4 If needed, rename the instrument to suit the needs of your organization.
- 5 Click **OK**.



- 6 Click **Configure Instrument > Online** to set the IP addresses for your instruments. See the online Help for more details to configure instruments.

NOTE

If prompted that a project must be selected, next to the **Project** option, click the browse button to select a project. Select the project even if it is already displayed as the Project option.

- 7 Click **Launch** to start the LC/MS instrument.

Next Steps

User Documentation



Data analysis and library management documentation can be found by scanning the code or navigating to <https://aglt.co/DALibMgmtDocs>.



Instrument documentation, step-by-step videos, and more can be found by scanning the code or navigating to <https://aglt.co/LCMSUserDocs>.

Agilent Community



To get answers to your questions, join over 10,000 users in the Agilent Community. Review curated support materials organized by platform technology. Ask questions to industry colleagues and collaborators. Get notifications on new videos, documents, tools, and webinars relevant to your work.

<https://community.agilent.com/>

www.agilent.com

© Agilent Technologies, Inc. 2024
D0113719
October 2024 Revision A.00

