

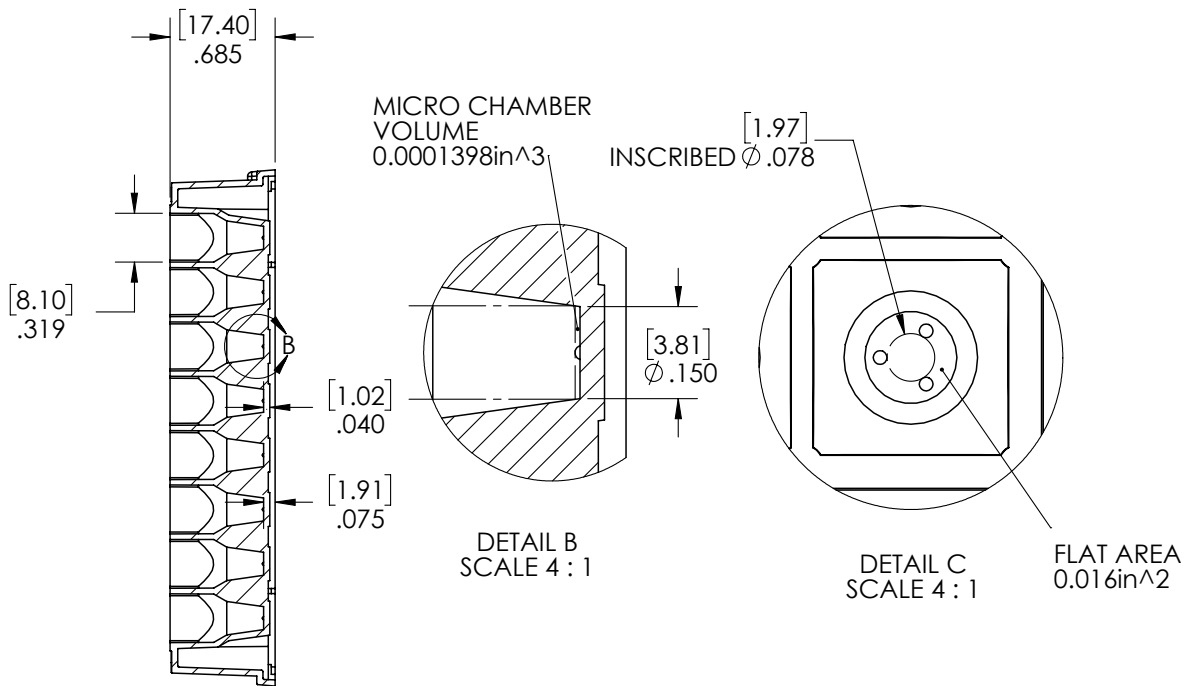
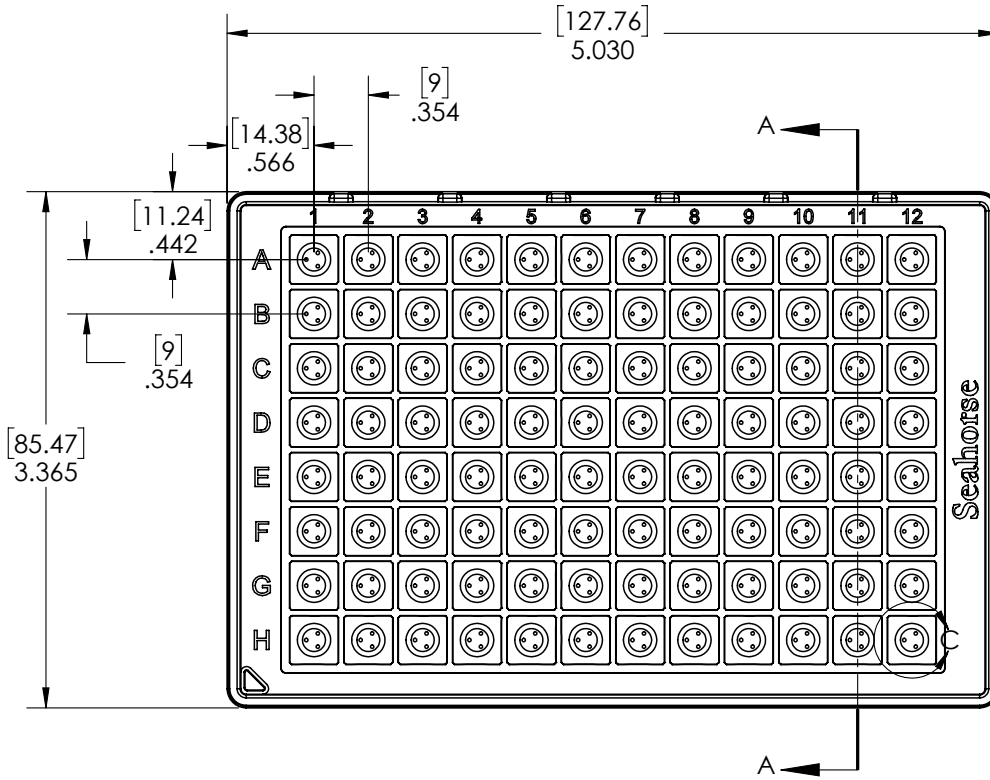
# XF Cell Culture Microplates

Click the icons below to navigate to plate dimensional drawings.

## Cell Culture Microplate Dimensions

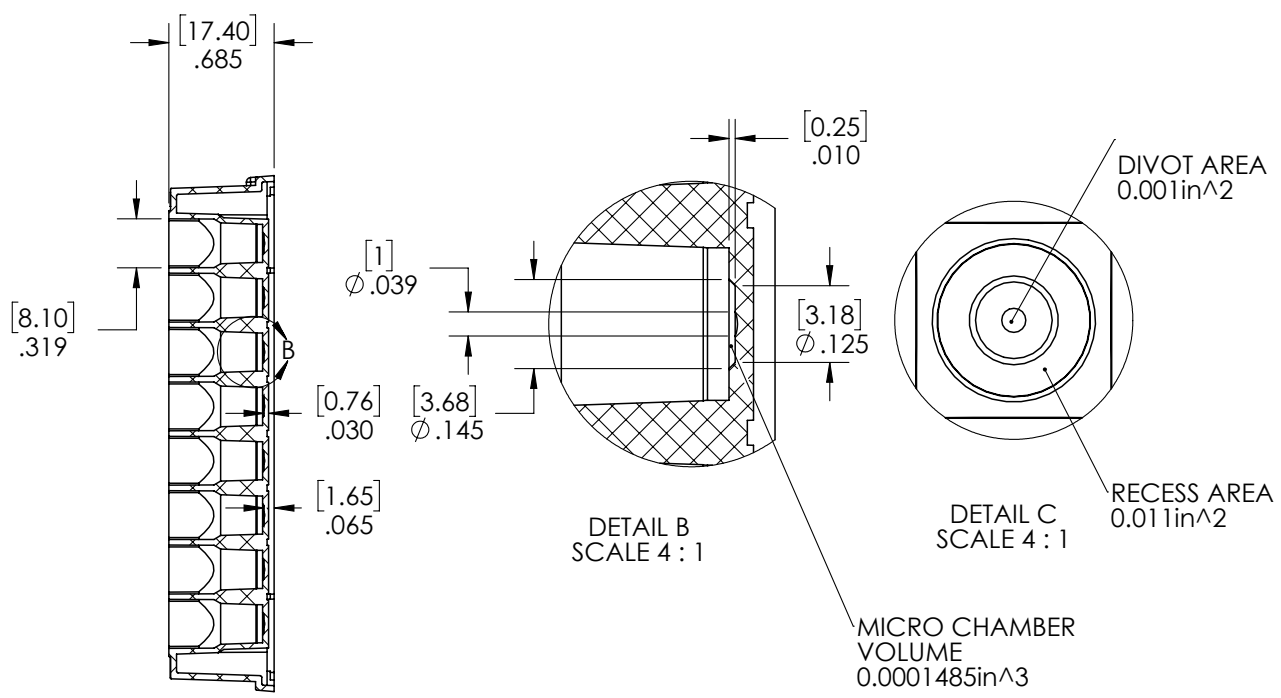
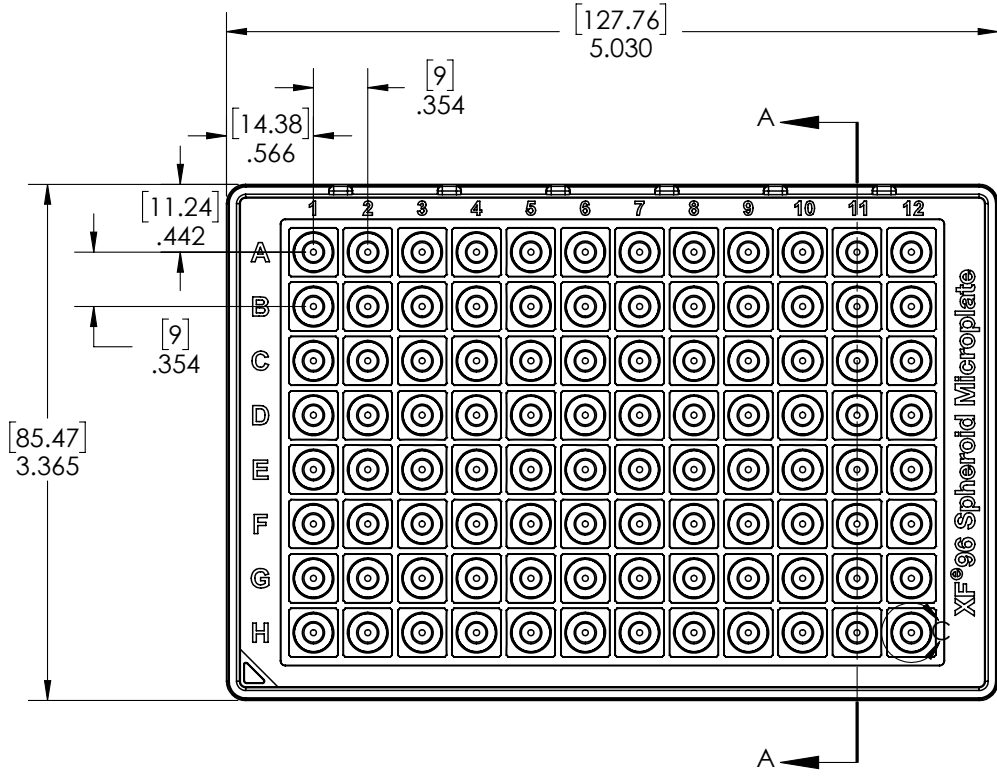
	Max Volume (μL)	Well Depth (mm)	Well Diameter Top/Bottom (mm)	Plate Length (mm)	Plate Width (mm)	Plate Height (mm)	A1 Row offset (mm)	A1 Column Offset (mm)	Well-to-Well Row Center Spacing (mm)	Well-to-Well Column Center Spacing (mm)	Well Bottom Elevation (mm)	Well Bottom Thickness (mm)	Well Bottom Area (mm <sup>2</sup> )
XFe96	250	15.49	8.1/3.81	127.76	85.47	17.4	11.24	14.38	9	9	0.89	1.02	11.40
XFe24	1000	18.92	17.09/6	127.76	85.47	20.32	15.74	18.88	18	18	0.51	0.89	28.26
XF HS Mini/XFp	250	15.49	8.1/3.81	35.5	82.3	17.4	9.65	17.75	9	N/A	0.89	1.02	11.40
XFe24 Islet	1000	19.18	17.09/3.15	127.76	85.47	20.32	15.74	18.88	18	18	0.5	0.65	7.79
XFe96 Spheroid	250	15.75	8.1/3.18	127.76	85.47	17.4	11.24	14.38	9	9	0.89	0.76	7.94

# XFe96 Cell Culture Microplate



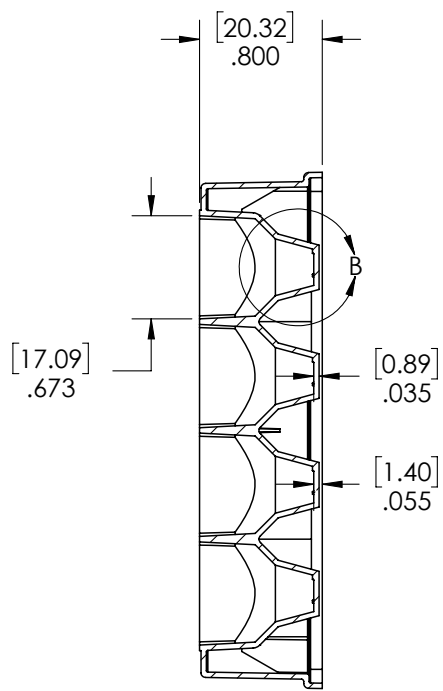
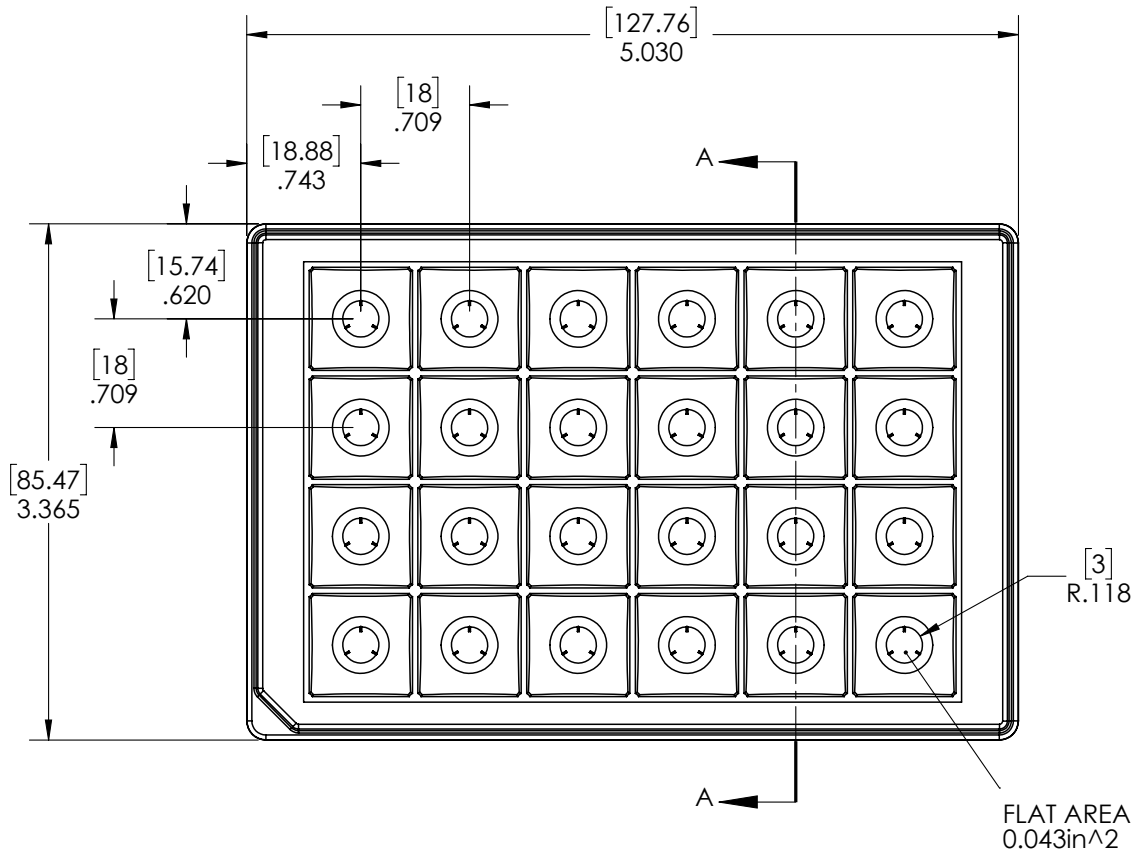
SECTION A-A

# XFe96 Spheroid Microplate

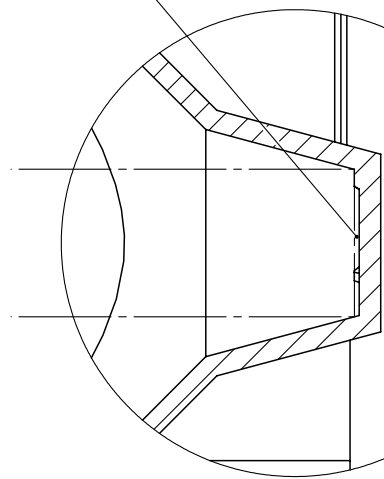


SECTION A-A

# XFe24 Cell Culture Microplate



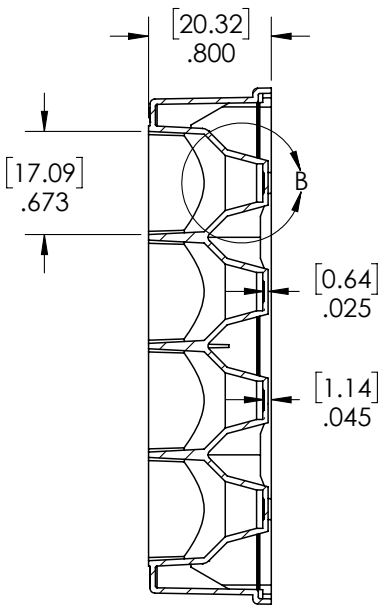
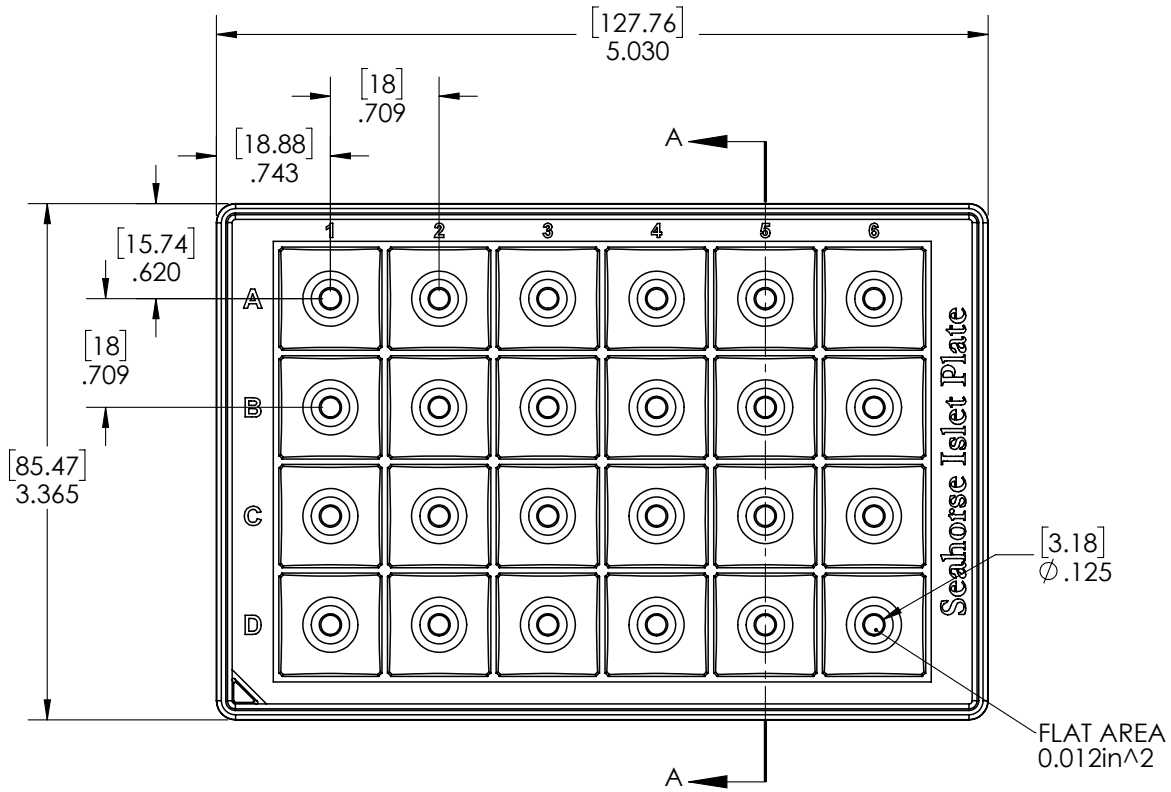
MICRO CHAMBER  
 VOLUME  
 0.0003562in<sup>3</sup>



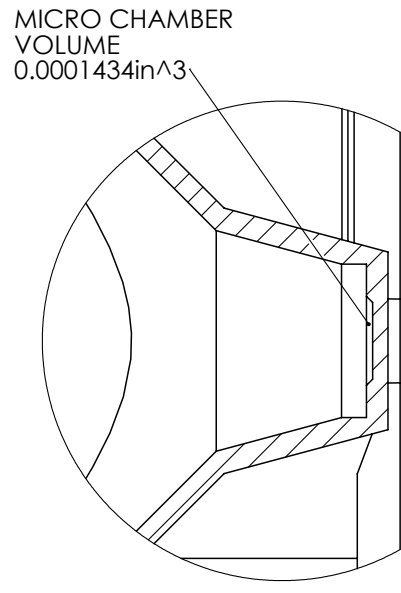
DETAIL B  
 SCALE 4 : 1

SECTION A-A

# XFe24 Islet Capture Microplate

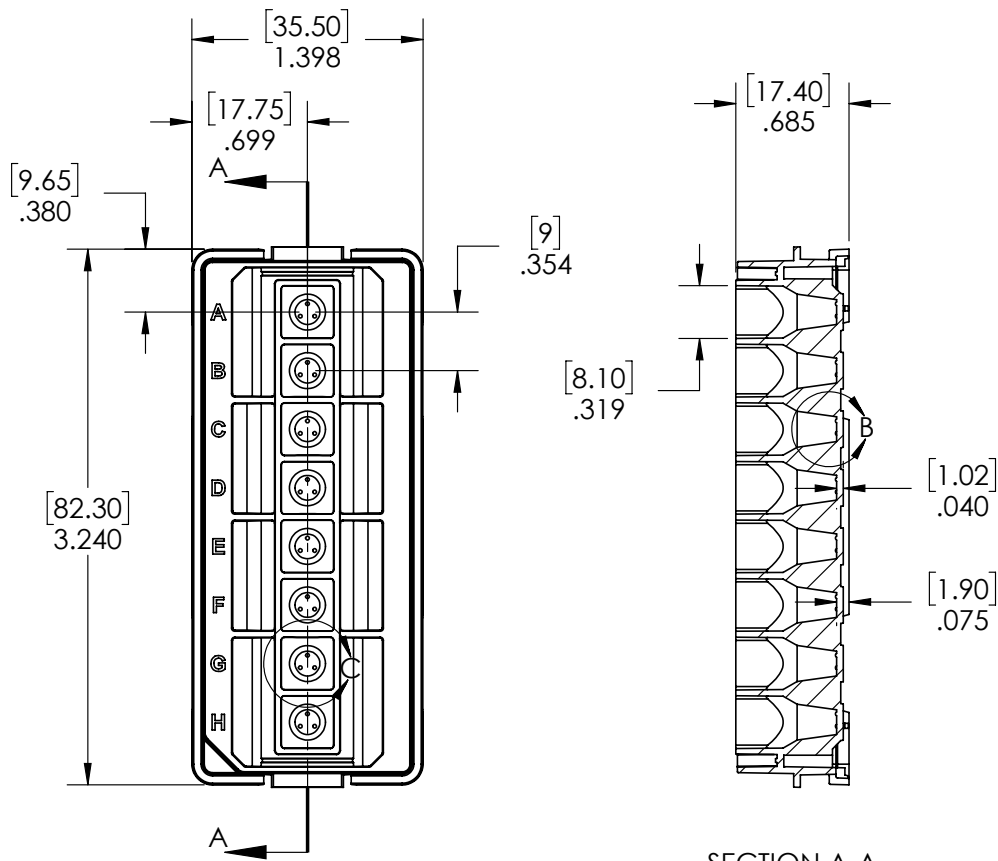


SECTION A-A

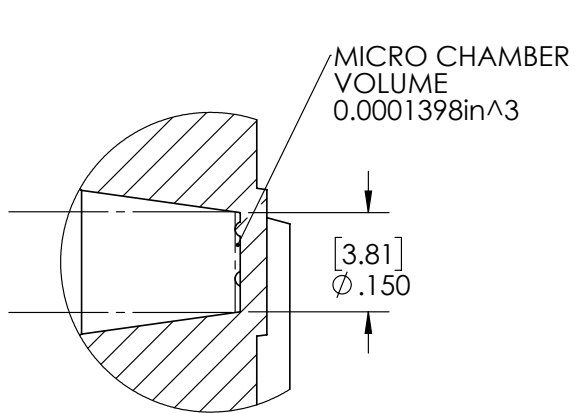


DETAIL B  
SCALE 4 : 1

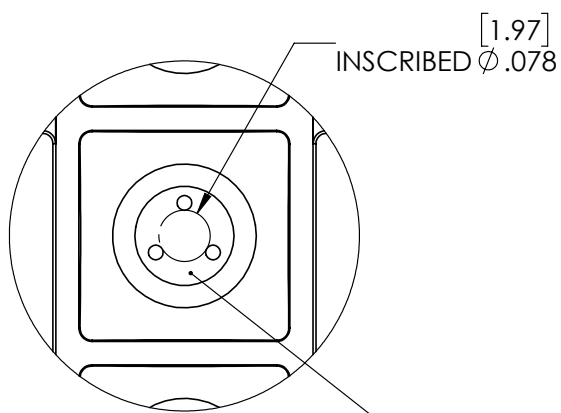
# XFp Cell Culture Miniplate



SECTION A-A

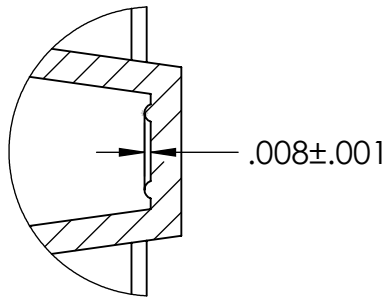
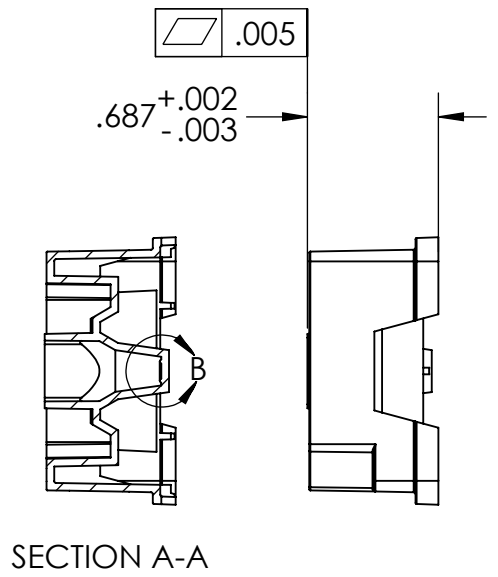
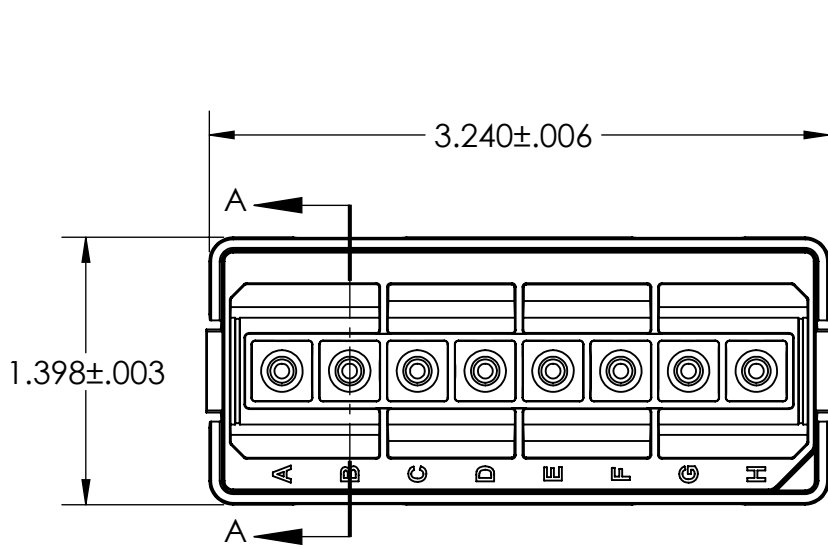


DETAIL B  
SCALE 4 : 1



DETAIL C  
SCALE 4 : 1

# XF HS Miniplate



DETAIL B  
SCALE 4 : 1

[www.agilent.com/chem/discoverxf](http://www.agilent.com/chem/discoverxf)

For Research Use Only. Not for use in diagnostic procedures.

DE.2682638889

This information is subject to change without notice.

© Agilent Technologies, Inc. 2017, 2020  
Printed in the USA, September 9, 2020  
5991-8747EN