

The Right GC Connections Make All the Difference

New Agilent Winged column nuts



Want to make column connection hassles a thing of the past?

Improve your GC flow path integrity—and lengthen your periods of unattended operation—with easy-to-use, leak-free connections from Agilent.

This unique, stainless steel GC column nut delivers a tight connection without expensive upgrades or adapters. It gives you the advantages of:

- Ease of use. Finger-tight design lets anyone in your lab make consistent connections without tools.
- Faster maintenance. The low-torque seal prevents ferrules from sticking or crumbling.
- Better stability. New locking collar holds your column in place for accurate column depth and ferrule positioning.
- Consistent installation. Ensure proper column installation every time, regardless of application, when using the Agilent Column Depth Guide.



Eliminate the need for retightening once and for all with the Agilent Self Tightening Winged column nut

Ensure simple, reliable connections throughout your GC with the new Agilent Winged column nut.

Ideal for oxygen-sensitive detectors, this column nut features a collar that lets you lock the column in place for accurate installation, every time. Other benefits include:

- Reliable performance. An innovative spring-driven piston continuously presses against the short graphite/polyimide ferrule. So, you can maintain a leak-free seal even after hundreds of injections.
- Less wasted time. There's no need to retighten after repeated thermal cycles.



Easy-to-use lock collar

Quickly lock your column in place and ensure a consistent column length. Measuring and locking the column depth before installation also eliminates the need to open the MS detector port—reducing the risk of vacuum leaks.

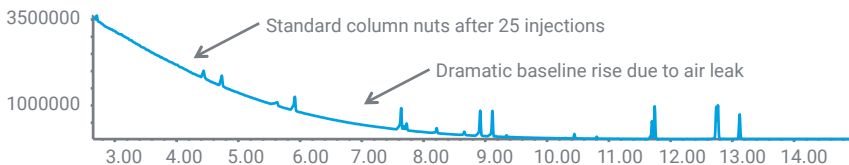
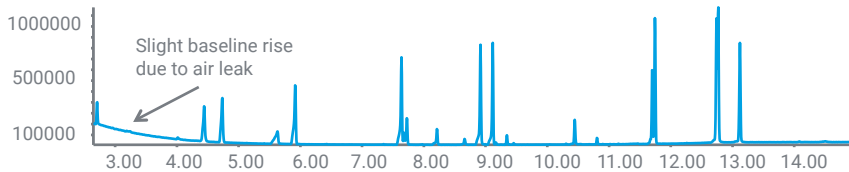
Find out more www.agilent.com/chem/stnut

Make sure your column connections withstand the test of time

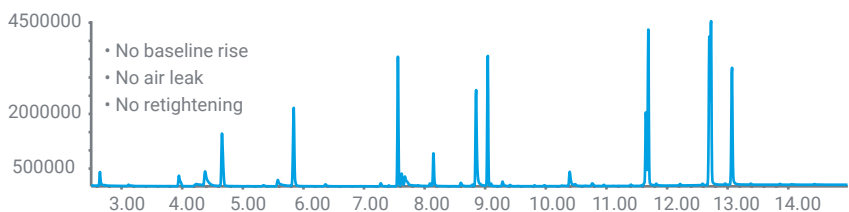
Comparison of standard fittings with Self Tightening Winged column nuts

With constant pressure applied by their proprietary piston design, Agilent Self Tightening Winged column nuts ensure a leak-free connection—even after hundreds of injections.

Standard column nuts after a new fitting



Agilent Self Tightening Winged column nuts after 400 injections



Three more ways to improve productivity and ensure consistent, high-quality data

1. Spend more time on what matters. New **GC intelligence** found in the Agilent Intuvo, 8890, and 8860 GC systems enables self-aware features and remote connectivity.
2. Eliminate laboratory variability—and ensure consistent flow, cleanliness, and recovery—with Agilent **sample preparation products**.
3. Choose Agilent **J&W GC columns** for the sharpest peaks, the best inertness, and the tightest column-to-column reproducibility.

End the frustration and lost productivity of frequent retightening.

To order, visit www.agilent.com/chem/stnut.

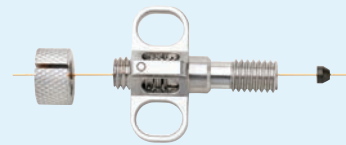
Find your local Agilent sales representative or Agilent authorized distributor at www.agilent.com/chem/contactus

DE99287814

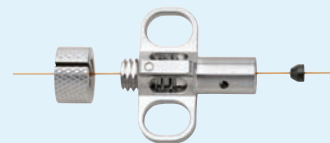
This information is subject to change without notice.

© Agilent Technologies, Inc. 2022
Published in the USA, August 1, 2022
5994-1253EN

Multiple configurations are available to suit your unique needs



Agilent Self Tightening Winged column nut for inlet and detector p/n [G3440-81011](#)



Agilent Self Tightening Winged column nut for MS transfer line p/n [G3440-81013](#)



Agilent Winged column nuts p/n [G3440-81018](#) and p/n [G3440-81019](#)



Agilent Capillary Column Depth Guide p/n [G3440-88000](#)