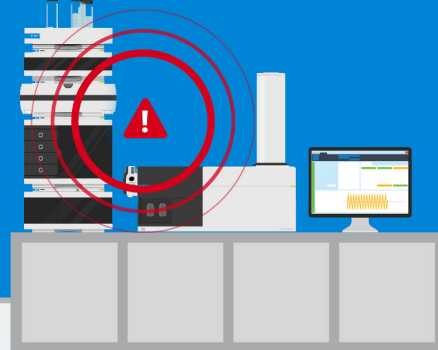


Real-Time Monitoring, Proactive Issue Resolution

Status Board for OpenLab



Your laboratory dashboard for better visibility across your entire data system environment

Status Board for OpenLab continuously monitors your entire data system environment, spotting issues proactively to prevent critical downtime and keep your lab running smoothly.

Gain comprehensive insights

View the status of all your lab assets and software components at-a-glance. Clear error notifications keep you informed about potential concerns within your software environment.

Streamline system maintenance

Effortlessly maintain an up-to-date inventory of installed software and connected instruments. Access detailed status and health reports to quickly troubleshoot and address issues, minimizing maintenance efforts.

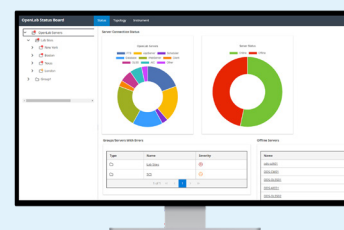
Stay ahead of potential issues and prevent downtime

Receive alerts when system parameters deviate from normal parameters, promptly flagging them so you can take corrective action before issues become critical.

Smooth implementation

Status Board is installed independent of your existing system eliminating the need for costly downtime or requalification. Status Board seamlessly integrates with your existing setup

Agilent
OpenLab



Maximize your software investment

Status Board for OpenLab is now included as part of your OpenLab Client Server/Enterprise Software Maintenance Agreement and at no additional cost.

Contact your Agilent representative to learn more.

Status Board for OpenLab can help meet your lab management challenges

Problem

Status Board for OpenLab lets you:

"I struggle to keep track of the numerous instruments across our labs and systems, resulting in inefficiencies and confusion."

- Gain a comprehensive view of all instruments and systems, simplifying asset management regardless of scale.
- Streamline asset management with a centralized, comprehensive tracking system.

"Manually identifying the source of problems consumes significant time and resources."

- Accurately pinpoint problem sources, even in complex, interconnected systems.
- Increase efficiency and accuracy by precisely identifying problem sources.

"Identifying service or process issues without constant monitoring is challenging."

- Continuously monitor and address service disruptions proactively.
- Enhance clarity and coordination by offering real-time verification of actions.

"Miscommunication about performed actions like reboots can hinder problem resolution."

- Receive real-time status updates, verifying actions like reboots for effective problem resolution.

"Different labs have varying needs for system monitoring and administration."

- Assign flexible roles to ensure appropriate access and visibility for all users.
- Tailor system monitoring and administration to specific lab requirements.

"Unmonitored disk usage and error logs can cause system failures."

- Conduct regular health checks of folder statuses and system disk usage to prevent unexpected storage issues.

"Unauthorized changes to drivers or software can compromise validated environments."

- Receive immediate alerts for any software version changes to maintain system integrity.

"External changes like IT patches can disrupt system functionality."

- Track installed patches to quickly identify and resolve issues caused by external changes.

To learn more about Status Board for OpenLab, watch these videos:

- [Overview and in-depth tutorial video](#)
- [Status Board highlights video](#)

DE17411965

This information is subject to change without notice.

© Agilent Technologies, Inc. 2024
Published in the USA, April 30, 2024
5994-7381EN