

Automated Sample Prep in Regulated and Nonregulated Labs Just Got Easier

The next step in the evolution of the AssayMAP Bravo is here



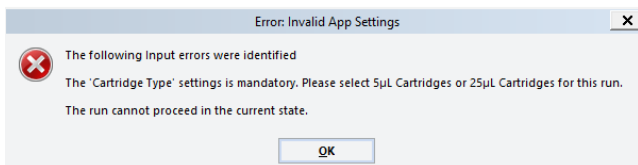
The AssayMAP Bravo Protein Sample Prep Workbench 4.0 software is now shipping with new systems and is available as an upgrade.

Benefits include:

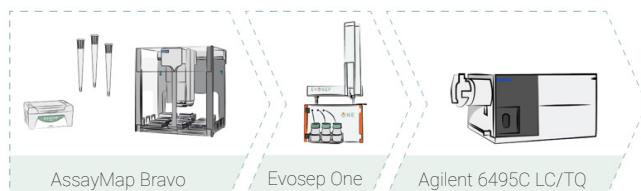
- The ability to use AssayMAP Bravo across the entire biopharmaceutical development process. Optional compliance-enabling features allow assays to move seamlessly between labs: From labs in the early stages of drug development which typically do not require compliance with regulatory standards such as 21 CFR Part 11, to labs in later stages of drug development which typically do require compliance to these standards.



- Walkup operation. Permission-level controls in the AssayMAP applications and utilities enable walk-up operation, so that, even novice users with minimal training can leverage the benefits of automated sample preparation.
- Simplified and enhanced documentation. Key parameter settings, protocol execution steps, and errors are now captured and used to generate easy-to-read reports.
- Improved error checking avoids issues during the sample prep run. An extensive series of checks are performed before the run begins. If an error is found, a pop-up message alerts the operator to make corrections before the run begins



- All major applications support the use of standard and large capacity cartridges
- Evosep workflow for semi-automated loading of Evtip Pure tips



Experiment ID selection

Support for large-capacity AssayMap cartridges

Method saving and browsing

Experiment management

Key new features on the user interface:

- Pull-down selection for standard- or large-capacity cartridges enables specific error messages and increased efficiency in protocol execution
- Experiment ID for capturing key steps in the protocol run and automatically generated reports
- Method saving and browsing for ease of use and walk-up operation

Simplified documentation

```
Report generated at OCT-27-2022 12:07:48
Experiment "Peptide Cleanup Example_220829", created at OCT-27-2022 12:03:54 by user admin
Description: Example run for reporting demonstration

Application "Peptide Cleanup v4.0", iteration 1 (simulated), launched at OCT-27-2022 12:05:47 by user admin
-----
Step "Initial Setup", started at OCT-27-2022 12:05:51, completed at OCT-27-2022 12:05:59 :
Method: 25ul Cartridge Default Settings.mth
Cartridge Type: 25µL Cartridges
Number of Full Columns of Cartridges: 1
1. Wash Station: 96AM Wash Station
2. Seating Station + Cartridges: 96AM Cartridge _Tip Seating Station + Cartridges
3. Organic Waste: 96 AbGene 1127, 1mL Deep Well, Square Well, Round Bottom
4. Samples: 96 Eppendorf 30129300, PCR, Full Skirt, PolyPro
5. Priming and Syringe Wash Buffer: 12 Column, Low Profile Reservoir, Natural PP
6. Elution Buffer: 12 Column, Low Profile Reservoir, Natural PP
7. Flow Through Collection: 96 Eppendorf 30129300, PCR, Full Skirt, PolyPro
8. Equilibration and Cartridge Wash Buffer: 96 AbGene 1127, 1mL Deep Well, Square Well, Round Bottom
9. Eluate Collection: 96 Eppendorf 30129300, PCR, Full Skirt, PolyPro

Step "Initial Syringe Wash", started at OCT-27-2022 12:05:59, completed at OCT-27-2022 12:06:00 :
Conduct Step: yes
Wash Cycles: 3

Step "Prime", started at OCT-27-2022 12:06:00, completed at OCT-27-2022 12:06:03 :
Conduct Step: yes
Volume: 250
Flow Rate: 300
Wash Cycles: 1
```

Example of a report generated after running the Peptide Cleanup application

Software upgrade kits:

G5263AA

- VWorks 14.1.1 Standard mode upgrade
 - Compliance mode features turned off
- Workbench 4.0

G5264BA

- VWorks 14.1.1 Plus mode upgrade
 - Compliance enabling features turned on
- Workbench 4.0

Visit our [webpage](#) or [contact us](#) to learn more about benefits of the AssayMAP Workbench 4.0.

www.agilent.com/chem/proteinsampleprep

DE83911612

This information is subject to change without notice.

© Agilent Technologies, Inc. 2022, 2024
Published in the USA, November 20, 2024
5994-5508EN