



Agilent 8850 GC Firmware

## Release Notes – Revision 3.0.0.181



# Notices

## Copyright

© Agilent Technologies, Inc. 2024

No part of this manual may be reproduced in any form or by any means (including electronic storage and retrieval or translation into a foreign language) without prior agreement and written consent from Agilent Technologies, Inc. as governed by United States and international copyright laws.

### **Agilent Technologies, Inc.**

5301 Stevens Creek Blvd.  
Santa Clara, CA 95051  
USA

## *Firmware/Software* Revision

This guide is valid for the 3.0.0.181 revision of *Agilent 8850GC Firmware*

## Warranty

The material contained in this document is provided "as is," and is subject to being changed, without notice, in future editions. Further, to the maximum extent permitted by applicable law, Agilent disclaims all warranties, either express or implied, with regard to this manual and any information contained herein, including but not limited to the implied warranties of merchantability and fitness for a particular purpose. Agilent shall not be liable for errors or for incidental or consequential damages in connection with the furnishing, use, or performance of this document or of any information contained herein. Should Agilent and the user have a separate written agreement with warranty terms covering the material in this document that conflict with these terms, the warranty terms in the separate agreement shall control.

## Technology Licenses

The hardware and/or software described in this document are furnished under a license and may be used or copied only in accordance with the terms of such license.

## Safety Notices

### CAUTION

A **CAUTION** notice denotes a hazard. It calls attention to an operating procedure, practice, or the like that, if not correctly performed or adhered to, could result in damage to the product or loss of important data. Do not proceed beyond a **CAUTION** notice until the indicated conditions are fully understood and met.

### WARNING

A **WARNING** notice denotes a hazard. It calls attention to an operating procedure, practice, or the like that, if not correctly performed or adhered to, could result in personal injury or death. Do not proceed beyond a **WARNING** notice until the indicated conditions are fully understood and met.



# Table of Contents

1	Document History	4
2	Introduction	5
3	Compatibility	6
4	Support Information	7
5	Agilent 8850 GC Firmware – What's new?	8
6	Resolved Issues in revision 3.0.0.181	9
7	Firmware Update Program	11



# 1 Document History

The table below lists all changes that have been made to this document.

Date	Version	Description
11th Sept 2024	Rev 1.00	Initial release.

## 2

# Introduction

The purpose of this document is to provide users of the Agilent **8850 Gas Chromatograph** guidance to relevant support documentation that contains further levels of information and detail

**Table 1 Terms and abbreviations used in this document**

<b>Terms</b>	<b>Description</b>
SSB	Software Status Bulletin
CDS	Chromatographic Data System
U	Update
SP	Service Pack
HF	Hotfix
SR	Service Release
[xx]	Final Build Numbers of a released product
DSA	Data System Adapter

# 3

## Compatibility

### Supported Agilent Data Systems

OpenLab CDS (2.8, 2.7, 2.6, 2.5)

OpenLab CDS ChemStation Edition (C.01.11 LTS, C.01.10, C.01.09 )

GC/MS MassHunter Acquisition (13.0)

OpenLab CDS EZChrom Edition (A.4.10 Update 3.)

### Supported Agilent GC Driver

Agilent GC Driver (4.2 or higher.)

## 4

# Support Information

- Agilent recommends using always the latest firmware revision of a firmware in order to avoid interoperability issues.
- Generally, Agilent recommends keeping the GC instrument firmware always current.

### **Notes for Agilent 8850 controlled by non-Agilent Chromatography Data Systems (CDS)**

- The 3rd-party CDS software vendor is responsible for compatibility testing with the respective CDS revision.
- The 3rd-party CDS software vendor defines the minimum firmware revision required for CDS compatibility.
- The 3rd-party CDS release notes issued by the respective CDS vendor may use different terminology for the firmware requirements such as "tested firmware", "supported firmware", "firmware requirements", "minimum tested firmware", etc.

### **OQ/PV - Validation Information**

If a firmware upgrade has been performed, normally no revalidation of the module/system is required. This is also stated in the released Service Note applicable to the release.



# 5

## Agilent 8850 GC Firmware – What's new?

### **What's new in 8850 GC Firmware 3.0.0.181?**

The 3.0 release of the 8850 firmware is the first production release for 8850 GCs shipped to customers.



## 6

# Resolved Issues in revision 3.0.0.181

The current firmware for the 8850A is 3.0.0.181 (Released 10<sup>th</sup> September 2024)

[http://download.chem.agilent.com/firmware/8850\\_FW\\_3.0.0.181.tgz.gpg](http://download.chem.agilent.com/firmware/8850_FW_3.0.0.181.tgz.gpg)

To install this version, use GC Firmware Update Utility 3.0.1.0 or greater.

Issue Id	SSB Problem Description Title
037012	Intuvo 9000 and 88xx Browser should disable 'Enable Blank Evaluation' when detector signals are not selected.
037227	Browser UI: Oven Ramp setpoints not invalidated after changing Max Temp.
041981	Detector Evaluation initial and final baseline should not fail because user selects Zero Signal.
044226	Add Gas Supply Pressure check back - in addition to method supply pressure check.
044756	Enhancement request to print the serial number of the main parts of the GC.
045387	8697: System reported "flow not ready" and "Pressure not ready" after every injection when purge time starts.
045496	8850 negative temperature ramps not working correctly.
045541	Maintenance Mode Options: remain cool or return to previous operating conditions.
045561	Detector Gas type labels do not agree between interfaces.
045577	Touchscreen and browser do not show any diagnostic progress for Browser sequence option 'Perform Pre-sequence Gas Supply Pressure check'.
045633	Browser UI column configuration doesn't correctly handle decreasing temperature limits.
045719	8850: Touchscreen does not show Carrier Gas Flow Correction after download from browser.
045800	8850 Reset and Factory Reset offers 2 sets of Valves in Browser UI.
045807	8850 Browser does not display or print Total Flow (for COC); inconsistent with touchscreen and GC Driver.
045845	Incorrect 8697 logs after gripper failure happens.

<b>045918</b>	Real Time Plot for Duty Cycle is incorrectly scaled.
<b>045925</b>	8697: Appended line on a sequence doesn't start the run.
<b>045939</b>	850 COC Browser method print forgets Inlet Control Mode and Septum Purge Flow.
<b>045943</b>	Browser UI: GC Model issues when selecting certain events in the Method\Events\Run Table Events Setpoints dialog.
<b>045963</b>	Each advance from System Setup Date/Time screen changes the clock regardless of going back or abort & exit.
<b>045975</b>	8850 Browser UI separated when loading reference chromatogram.
<b>046107</b>	8850: Oven ramp upper limit in method parameters edit allows setting of 400C/min which exceeds the data sheet limit.
<b>046215</b>	H2 Sensor purged into the oven during a run.
<b>046250</b>	GC aborted sequence mid-run and recovered without notifying user.
<b>046307</b>	GC Driver Early Maintenance Feedback counters: Linked field for User Defined counters is not available.

# 7

## Firmware Update Program

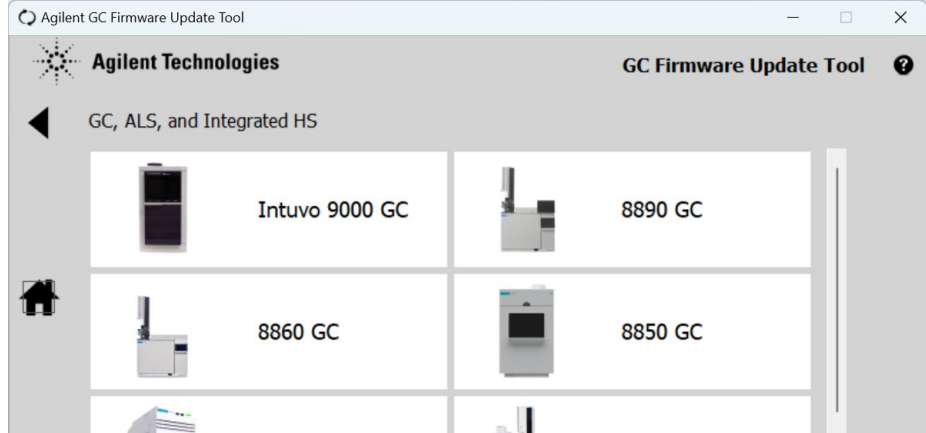
The GC firmware update program is supplied as part of the Firmware Update Package.

Always use the latest version of the update tool. The current FW update Utility is 3.0.1.0

After the program has been installed and executed the following screen appears.

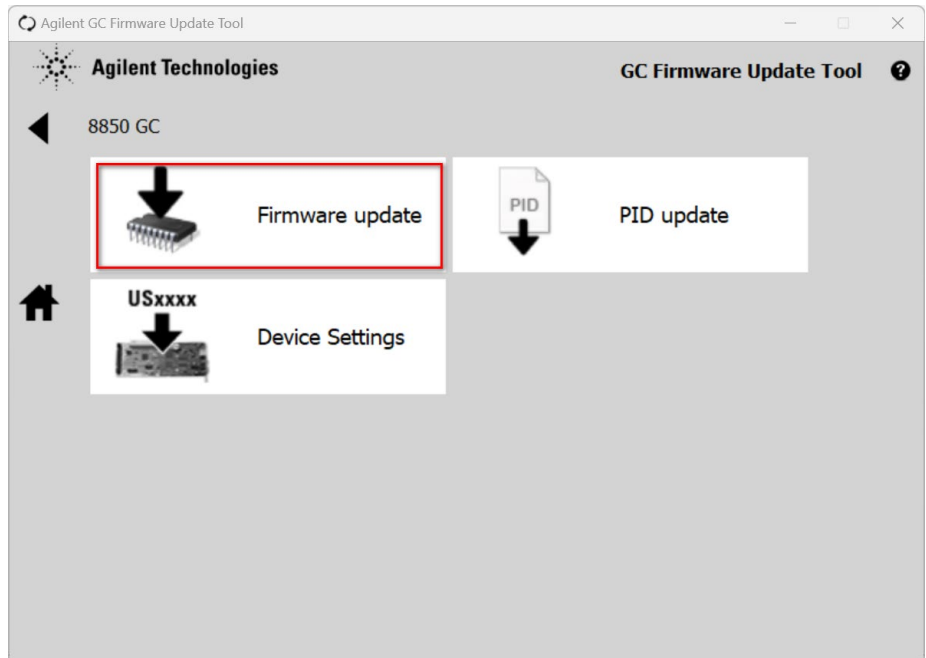


This enables the user to select which instrument type needs to have its firmware downloaded. Select the **GC and ALS**.

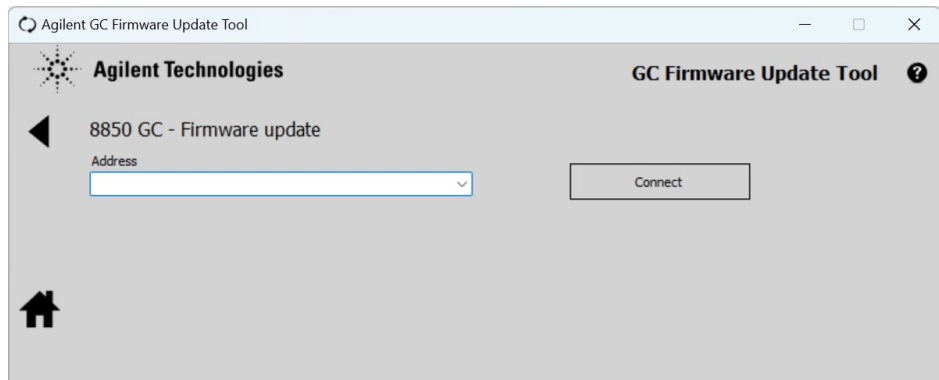


Choose the **8850 GC** from the Product menu.

The next screen allows us to either modify firmware or PID values for the EPC modules.

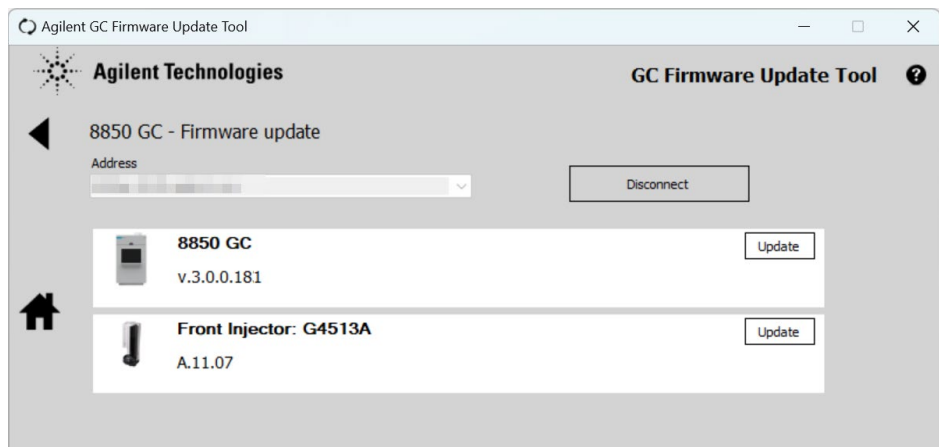


Select **Firmware update**.



After choosing to update firmware, you must then enter the **IP address** or **host name** of the 8850 that you wish to connect to and then select **Connect**.

Information such as current installed firmware will then be displayed.

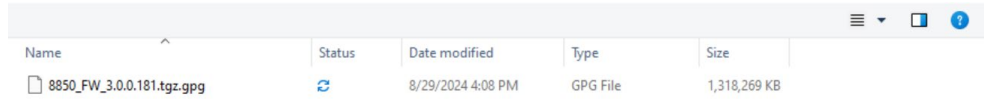



Select **Update**.

Selects **Accept and Install**.

A Windows Explorer directory will then appear and you must select the firmware revision that needs to be downloaded. If the required firmware version is not displayed then you can "browse" your harddrive to find it.

The firmware file has the structure 8850\_FW\_X.X.X.tgz.gpg



Name	Status	Date modified	Type	Size
8850_FW_3.0.0.181.tgz.gpg		8/29/2024 4:08 PM	GPG File	1,318,269 KB

After you have selected the correct file the firmware will automatically be downloaded to the GC and installed.

After the installation is done the GC will reboot and the firmware update is complete.

[www.agilent.com](http://www.agilent.com)

© Agilent Technologies, Inc. 2024

D00XXXXX