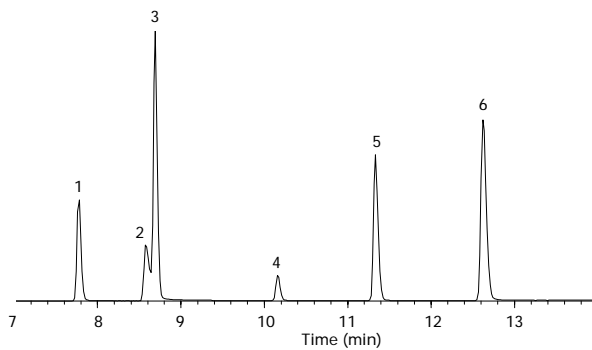


Solvents

Column: GS-CarbonPLOT
30 m x 0.32 mm I.D., 1.5 μ m
J&W P/N: 113-3132
Carrier: Helium at 30 cm/sec (measured at 125°C)
Oven: 125°C for 2 min
125-350°C at 20°/min
Injector: Split 1:20, 250°C
Detector: MS, SIM mode
280°C transfer line

1. Methylene chloride
2. Acetone
3. Carbon disulfide
4. Ethyl ether
5. Ethyl acetate
6. Benzene



C605