

## Permanent Gases

**Column:** GS-CarbonPLOT  
30 m x 0.32 mm I.D., 3.0 µm

**P/N:** 113-3133

**Carrier:** Helium at 27 cm/sec (calculated off N<sub>2</sub> at 35°C)

**Oven:** 35°C isothermal

**Injector:** Split 1:30, 185°C, 250 µL injection volume

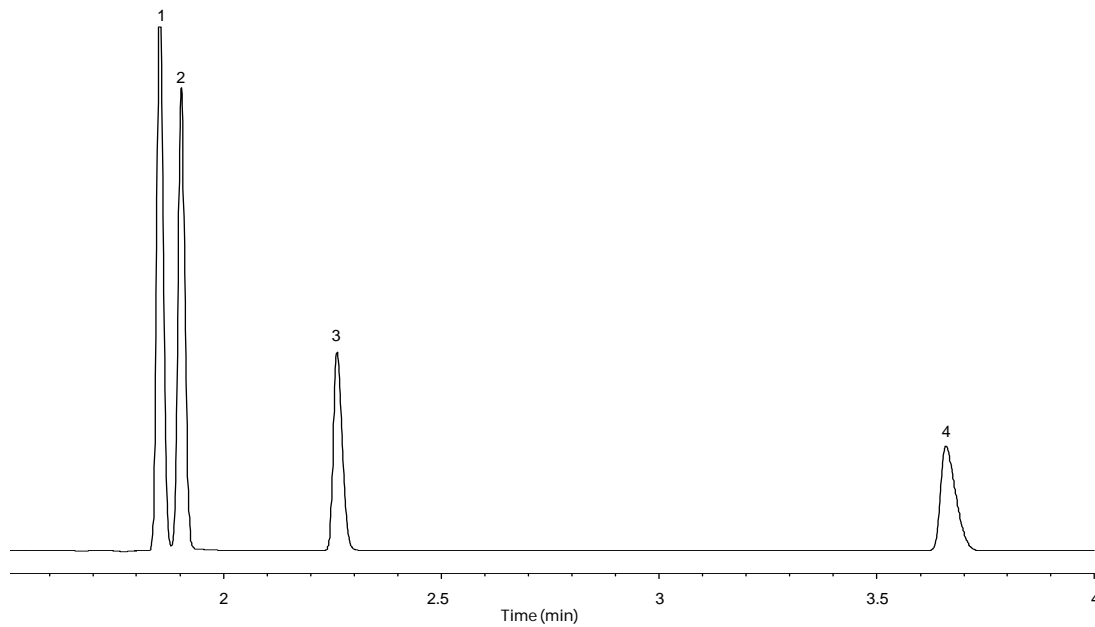
**Detector:** TCD, 150°C

1. Nitrogen and Oxygen (5% each)

2. Carbon monoxide (5%)

3. Methane (4%)

4. Carbon dioxide (5%)



C776