

# Agilent Has The Right GC Sample Introduction Product For Your Lab

Agilent sample introduction portfolio for gas chromatography





# With Agilent, You Have the Flexibility to Choose the Automatic Sampler Perfectly Suited for the Needs of Your Lab

Whether you're detecting emerging contaminants in drinking water, testing drugs for purity, or quantifying pesticides in food, your results have to be correct, precise, and irrefutable. As your lab's requirements and needs continue to change, achieving that level of precision is challenging.

Agilent helps you meet that challenge head on. With our portfolio of sample introduction products for gas chromatography, we have a solution that's suited to the specific types of samples and analyses you perform. Regardless of your sample introduction needs, Agilent has a sampler to support your lab's productivity.



## Agilent sample containment solutions

Agilent vials are designed to meet the high standards you have come to expect:

- Guaranteed consistent performance from lot to lot
- Unsurpassed rigor in quality control and manufacturing
- Easy selection based on volume, sample type, and instrument
- Better value

Agilent vials perform seamlessly with a variety of analytical instruments. Use our online selection tool to quickly find the right products for complete confidence in your sample containment.

[www.agilent.com/search/gn/vial-selector](http://www.agilent.com/search/gn/vial-selector)



# Automate Your Analysis

Eliminate the uncertainty of manual injection



## Our most flexible liquid sampling system: **Agilent 7693A automatic liquid sampler (ALS)**

Agilent 7693A, with advanced injection features, helps ensure your best chromatography. Whether you have a few or hundreds of samples to analyze, you'll experience sample handling and injection capabilities that are best in class.

- Three-layer sandwich injections let you add internal standard and protectant in a single injection.
- Sample preparation and look-ahead capabilities prepare samples while the GC is getting ready for analysis.
- Two towers enable sample preparation or dual-simultaneous injections.
- Sample heater and mixer improve results for compounds with a high molecular weight.
- Barcode reader allows the system to perform specific actions when mismatch occurs, maintaining chain of custody.



### Extended sampling flexibility and automation options

Variable needle depths allow you to sample anywhere within the vial, while optional sample handling capabilities further enhance your productivity.



Liquid/liquid extraction



Small-volume sampling



Reagent and standard addition



Dilution/aliquoting/reconstitution



Heating/mixing



Barcode reading



**7650A ALS**  
50-vial capacity

**Robust and productive:**  
**Agilent 7650A automatic liquid sampler (ALS)**

For labs with intermediate sampling needs, the Agilent 7650A is a highly efficient choice.

- Add internal standard and protectant in a single injection using three-layer sandwich injections.
- Up to 50 samples enable continuous overnight operation.
- Programmable injection optimizes plunger speed for large-volume or challenging applications..



**8697-XL tray**  
(120-vial capacity)

**8697**  
(48-vial capacity)

**Intelligent sampling that simplifies life in the lab:**  
**Agilent 8697 headspace samplers**

Agilent 8697 headspace samplers integrate directly with your GC, providing unmatched instrument intelligence features.

- Integrated intelligence and remote accessibility let you obtain status updates anytime, anywhere.
- The ability to use hydrogen carrier gas helps you avoid problems with helium shortage.
- Automated diagnostics tell you when the instrument needs attention—and provide visual step-by-step procedures for maintenance or repair.
- Advanced microchannel-based EPC module with atmospheric pressure compensation and valve-based sampling deliver unprecedented precision.
- High vial capacity allows continuous operation overnight or through the weekend without sample replacement.



**7697A headspace sampler**  
12/111-vial capacity

**Precision and reliability:**  
**Agilent 7697A GC headspace sampler**

This cross-GC-compatible headspace system is ideal for labs that need low-volume headspace capabilities.

- 12- or 111-vial capacity is compatible across a broad range of GC systems and software.
- Use hydrogen carrier gas to avoid helium shortages.
- Electronic pneumatic control, vial leak checking, and barometric pressure compensation ensure consistent results.



### Agilent PAL sampler

- Combines liquid, headspace, and SPME/SPME Arrow into one GC
- Automate more complicated sample preparation procedures

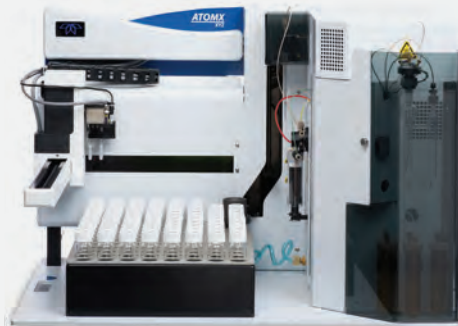
Agilent PAL3 LSI 684 liquid vials (2 mL)  
 Agilent PAL3 RSI for liquid, headspace, or SPME  
 Agilent PAL3 RTC robotic tool change for liquid, headspace, or SPME



**Markes TD100-xr**  
 Cryogen-free re-focusing  
 with 100-sample capacity

### Markes thermal desorbers

- Highly sensitive and fully automated, these systems are designed for direct desorption of materials and accurate sample analysis.
- Support sorbent tubes, canisters, and online analysis.
- Multigas-enabled systems are compatible with hydrogen, nitrogen, and helium carrier gas.
- Modular configurations can include multiple sampling modes for ultimate flexibility.



**Tekmar Atomx XYZ** 84-vial capacity

### Tekmar purge and trap

- Efficient trap cooling design and innovative moisture control system (MCS) facilitate analysis of water and soil samples.
- Ultralow carryover supports 40 mL VOA vials.
- Foam detection/prevention and sparge vessel heating options are available.
- Software features built-in system diagnostic capabilities.



Thermal separation probe

## Analyze trace levels of solid, liquid, and slurry samples quickly in the field

This thermal separation probe provides fast analysis of solid, liquid, and slurry samples with limited or zero sample preparation required.

This chart provides a quick reference for identifying which Agilent sample introduction solution is compatible with your lab's gas chromatograph setup.

	Intuvo 9000 GC	8890 GC	8860 GC	7890 GC	7820A GC	6850 Series II	6890 GC	5975T GC/MS
7693A ALS	•	•	•	•	•*	•**	•	•**
7650A ALS	•	•	•	•	•			•
8697 headspace samplers	•	•	•					
7697A headspace sampler	•	•	•	•	•	•	•	•
PAL samplers	•	•	•	•	•		•	
Markes thermal desorber		•	•	•	•	•	•	•
Tekmar purge and trap	•	•	•	•	•	•	•	•
Thermal separation probe	•	•		•				•

\* Injector only unless ordered after June 1, 2015, or as part of a 5975E/5977E series MSD bundle (MSD with 7820A)

\*\* Injector only

To find the right Agilent sample introduction device for your specific needs, visit [www.agilent.com/chem/gcsampleintro](http://www.agilent.com/chem/gcsampleintro)



Achieve highly reproducible injections over a long lifetime using Agilent premium Blue Line GC autosampler syringes.

## Put Our Insight to Work for You

CrossLab is an Agilent capability that integrates services and consumables to support workflow success, improve productivity, and enhance operational efficiency. In every interaction, we strive to provide insight that helps you achieve your goals.

Learn more about CrossLab at [www.agilent.com/crosslab](http://www.agilent.com/crosslab)



Learn more:

[www.agilent.com/chem/gcsampleintro](http://www.agilent.com/chem/gcsampleintro)

Considering flexible payment plans? Visit [www.agilent.com/chem/financing](http://www.agilent.com/chem/financing)

In need of support? Reach out at [www.agilent.com/en/support](http://www.agilent.com/en/support)

U.S. and Canada:  
**1-800-227-9770**  
[agilent\\_inquiries@agilent.com](mailto:agilent_inquiries@agilent.com)

Europe:  
[info\\_agilent@agilent.com](mailto:info_agilent@agilent.com)

Asia Pacific:  
[inquiry\\_lsca@agilent.com](mailto:inquiry_lsca@agilent.com)

DE48699902

This information is subject to change without notice.

© Agilent Technologies, Inc. 2023  
Published in the USA, April 21, 2023  
5991-1287EN

