

Always innovative

The history of Agilent J&W is the history of the GC column

For over 50 years, Agilent has broken new ground with GC innovations, benefiting labs and entire industries worldwide. To explore some key milestones, scroll over each box.

1974

1979

1986

1987

1988

1991

J&W Scientific, founded by UC Davis Professor Walt Jennings, develops the first all-glass capillary bonded phase—now an industry standard.



Always innovative

The history of Agilent J&W is the history of the GC column

For over 50 years, Agilent has broken new ground with GC innovations, benefiting labs and entire industries worldwide. To explore some key milestones, scroll over each box.

1974

1979

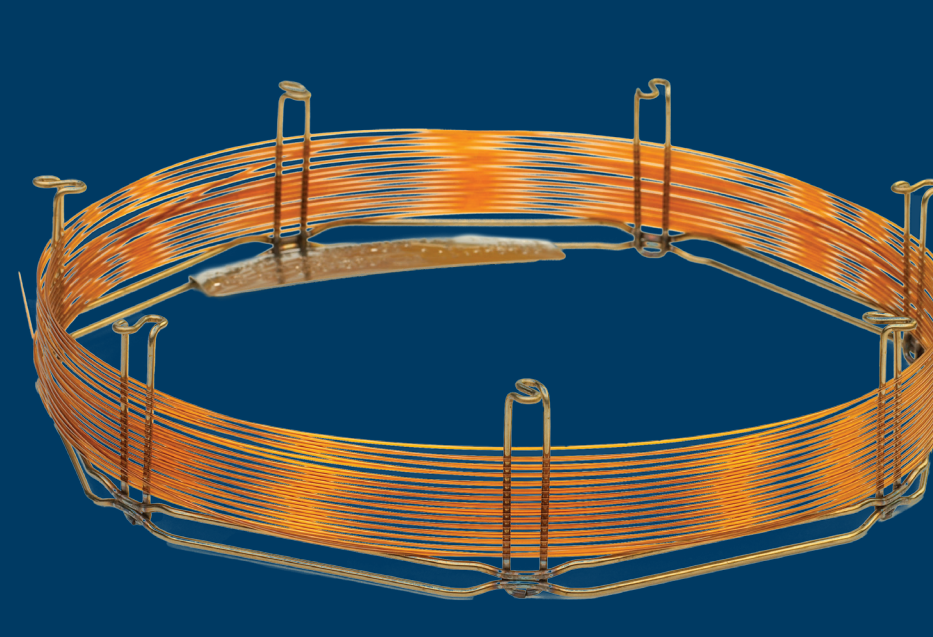
1986

1987

1988

1991

Agilent, as part of HP, invents fused silica capillary tubing.



Always innovative

The history of Agilent J&W is the history of the GC column

For over 50 years, Agilent has broken new ground with GC innovations, benefiting labs and entire industries worldwide. To explore some key milestones, scroll over each box.

1974

1979

1986

1987

1988

1991

J&W Scientific introduces DB-624, the world's first designer stationary phase.



Always innovative

The history of Agilent J&W is the history of the GC column

For over 50 years, Agilent has broken new ground with GC innovations, benefiting labs and entire industries worldwide. To explore some key milestones, scroll over each box.

1974

1979

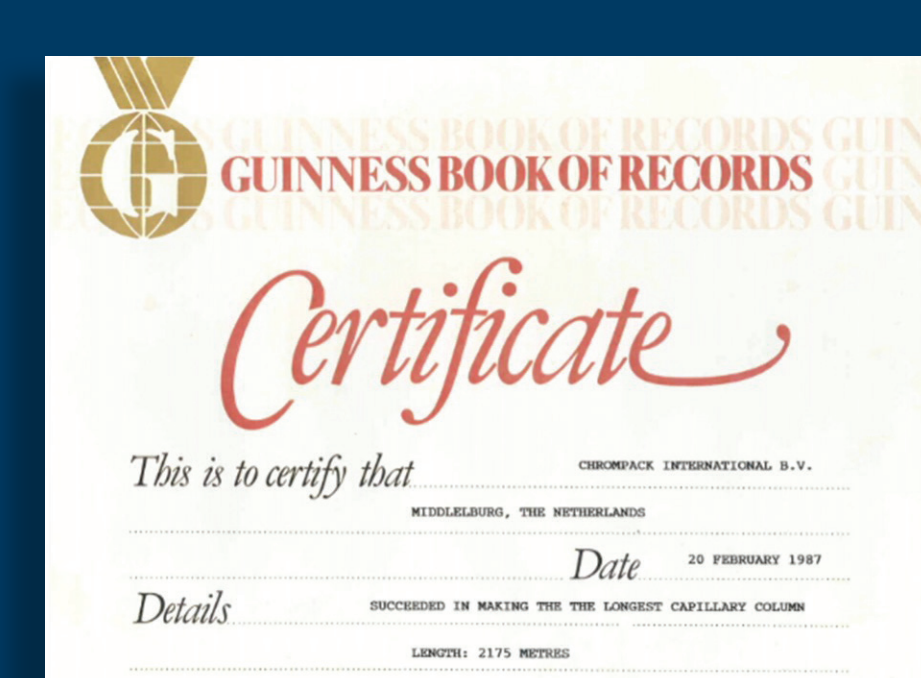
1986

1987

1988

1991

Chrompack recognized by the Guinness Book of Records for making the longest capillary column (2175 m).



Always innovative

The history of Agilent J&W is the history of the GC column

For over 50 years, Agilent has broken new ground with GC innovations, benefiting labs and entire industries worldwide. To explore some key milestones, scroll over each box.

1974

1979

1986

1987

1988

1991

Chrompack unveils the first PLOT fused silica capillary columns



Always innovative

The history of Agilent J&W is the history of the GC column

For over 50 years, Agilent has broken new ground with GC innovations, benefiting labs and entire industries worldwide. To explore some key milestones, scroll over each box.

1974

1979

1986

1987

1988

1991

J&W Scientific introduces DB-5ms, the first column designed for low-bleed MS.



Always innovative

The history of Agilent J&W is the history of the GC column

For over 50 years, Agilent has broken new ground with GC innovations, benefiting labs and entire industries worldwide. To explore some key milestones, scroll over each box.

2000

2008

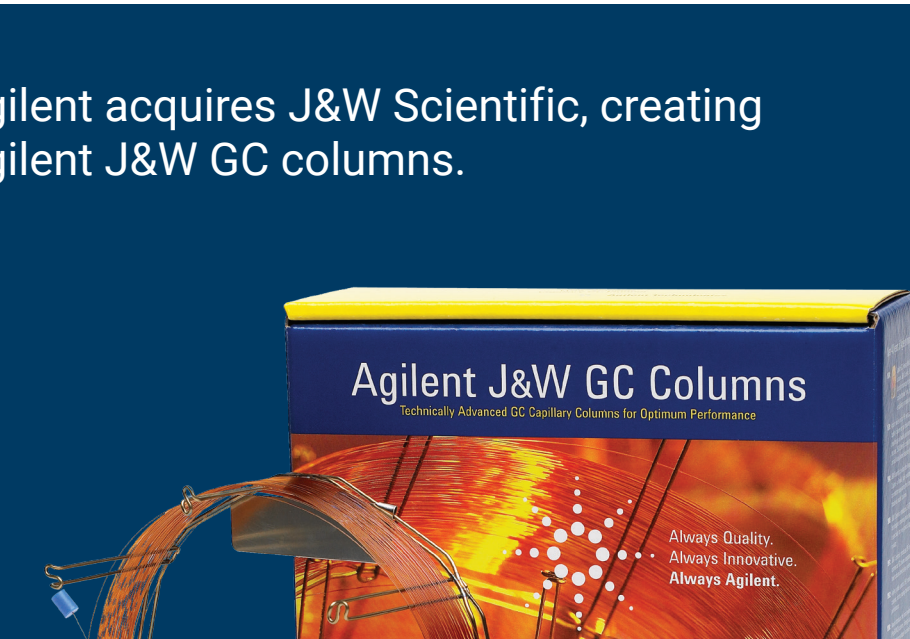
2008

2009

2016

2019

Agilent acquires J&W Scientific, creating Agilent J&W GC columns.



Always innovative

The history of Agilent J&W is the history of the GC column

For over 50 years, Agilent has broken new ground with GC innovations, benefiting labs and entire industries worldwide. To explore some key milestones, scroll over each box.

2000

2008

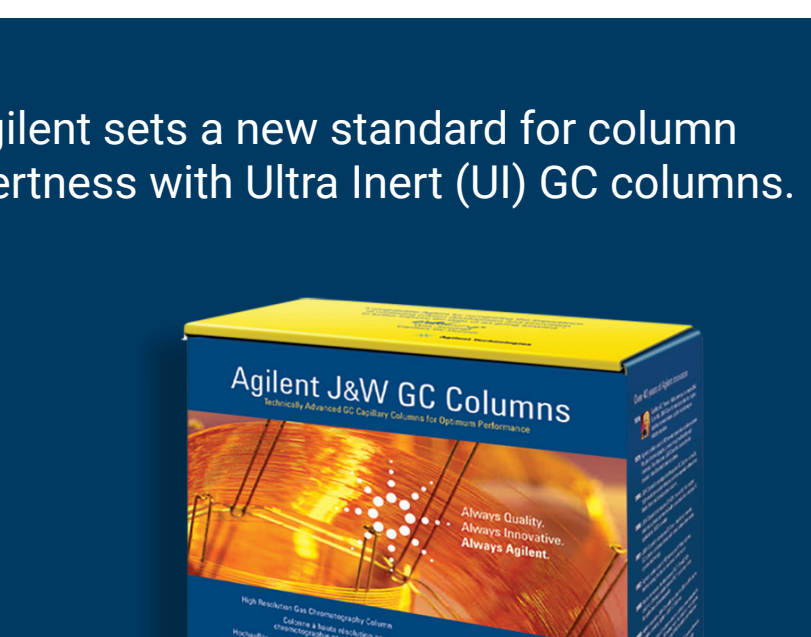
2008

2009

2016

2019

Agilent sets a new standard for column inertness with Ultra Inert (UI) GC columns.



Always innovative

The history of Agilent J&W is the history of the GC column

For over 50 years, Agilent has broken new ground with GC innovations, benefiting labs and entire industries worldwide. To explore some key milestones, scroll over each box.

2000

2008

2008

2009

2016

2019

Agilent acquires Varian-Chrompack, making Agilent J&W the industry's broadest, most innovative GC column family.



Always innovative

The history of Agilent J&W is the history of the GC column

For over 50 years, Agilent has broken new ground with GC innovations, benefiting labs and entire industries worldwide. To explore some key milestones, scroll over each box.

2000

2008

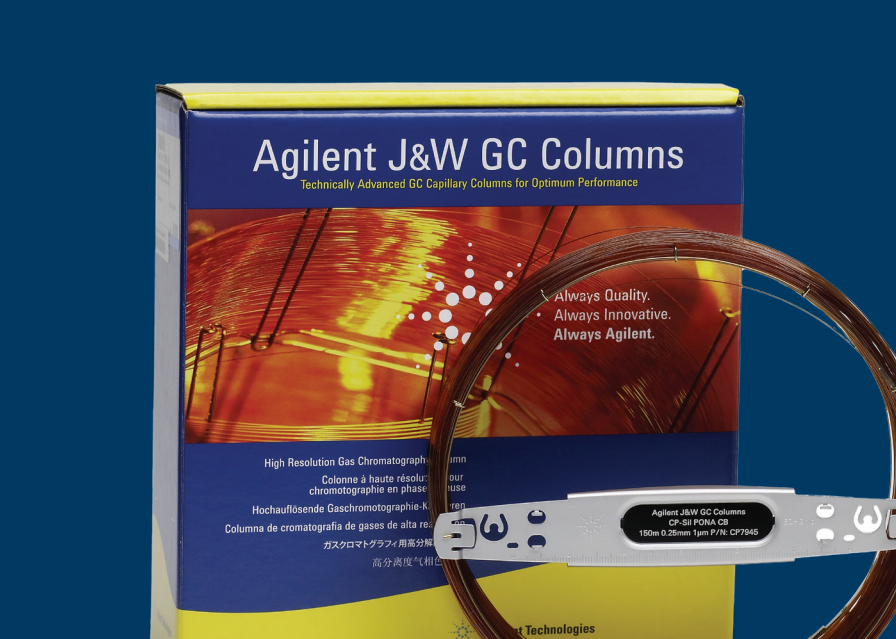
2008

2009

2016

2019

Agilent introduces fast, direct heating and cooling Intuvo columns and Guard Chips.



Always innovative

The history of Agilent J&W is the history of the GC column

For over 50 years, Agilent has broken new ground with GC innovations, benefiting labs and entire industries worldwide. To explore some key milestones, scroll over each box.

2000

2008

2008

2009

2016

2019

Agilent introduces Smart Key column identification/use monitoring.

